

# Welcome!

We are so glad you are here!

We will get started shortly.  
In the meantime, we invite you to intentionally enter this space.



Silence your cell phone



Stretch



Close the door



Take a few deep breaths



Close browser windows



Emotionally release your to-do list



Check your audio and video



Take a bio break

*Networking Café*

**Community Consortium Plan**

Tuesday, October 29, 2024 | 3-4 PM ET

**NICHQ**  
National Institute for  
Children's Health Quality

**HEALTHY**  
**start**  
TA & SUPPORT CENTER

# Community Consortium Plan

*Networking Café*

Tuesday, October 29, 2024

3-4 PM ET

*THE HEALTHY START TA & SUPPORT CENTER IS OPERATED BY THE NATIONAL INSTITUTE FOR CHILDREN'S HEALTH QUALITY (NICHQ). THIS PROJECT IS SUPPORTED BY THE HEALTH RESOURCES AND SERVICES ADMINISTRATION (HRSA) OF THE U.S. DEPARTMENT OF HEALTH AND HUMAN SERVICES (HHS) UNDER GRANT NUMBER 1 UF5MC327500100 TITLED SUPPORTING HEALTHY START PERFORMANCE PROJECT.*

**NICHQ**  
National Institute for  
Children's Health Quality

**HEALTHY**  
**start**  
TA & SUPPORT CENTER



# Agenda

Welcome & Introduction

**Tess Pierson**  
Healthy Start TA &  
Support Center  
(TASC)

SDOH Level-Setting

**Piia Brown**  
TASC

Discussion

All

Next Steps

**Tess Pierson**  
TASC





# Welcome & Introduction

Tess Pierson

HEALTHY START TA & SUPPORT CENTER

*NETWORKING CAFÉ: COMMUNITY CONSORTIUM PLAN  
HOSTED BY THE HEALTHY START TA & SUPPORT CENTER AT NICHQ*

**NICHQ**  
National Institute for  
Children's Health Quality

**HEALTHY**  
**start**  
TA & SUPPORT CENTER

# Café Purpose



**To provide a designated time and space for grantees to:**

- CONNECT WITH HEALTHY START GRANTEEES TO DISCUSS THE COMMUNITY CONSORTIUM PLAN
- DISCUSS CHALLENGES AND SOLUTIONS IDENTIFIED SO FAR DURING THE PLANNING PROCESS
- PRACTICE INTENTIONAL CONVERSATION
- SHARE AND HEAR THE EXPERTISE AMONG OTHER HEALTHY START GRANTEEES

*NETWORKING CAFÉ: COMMUNITY CONSORTIUM PLAN  
HOSTED BY THE HEALTHY START TA & SUPPORT CENTER AT NICHQ*



# Café Goal

TO PROVIDE A LEVEL-SETTING OVERVIEW OF SOCIAL DETERMINANTS OF HEALTH (SDOH).

TO PROVIDE GRANTEE DEDICATED TIME TO DISCUSS THE VARIOUS ELEMENTS OF THE COMMUNITY CONSORTIUM PLAN AND ANY CHALLENGES OR SUCCESSES EXPERIENCED SO FAR IN THE PLANNING PROCESS.

*NETWORKING CAFÉ: COMMUNITY CONSORTIUM PLAN  
HOSTED BY THE HEALTHY START TA & SUPPORT CENTER AT NICHQ*

# Café Guidelines



- **Listen** TO UNDERSTAND
- **Focus** ON WHAT MATTERS
- **Contribute** YOUR THINKING
- **Link & Connect** IDEAS
- **Have fun!**

*NETWORKING CAFÉ: COMMUNITY CONSORTIUM PLAN  
HOSTED BY THE HEALTHY START TA & SUPPORT CENTER AT NICHQ*

# SDOH Overview

Piia Brown

HEALTHY START TA & SUPPORT CENTER

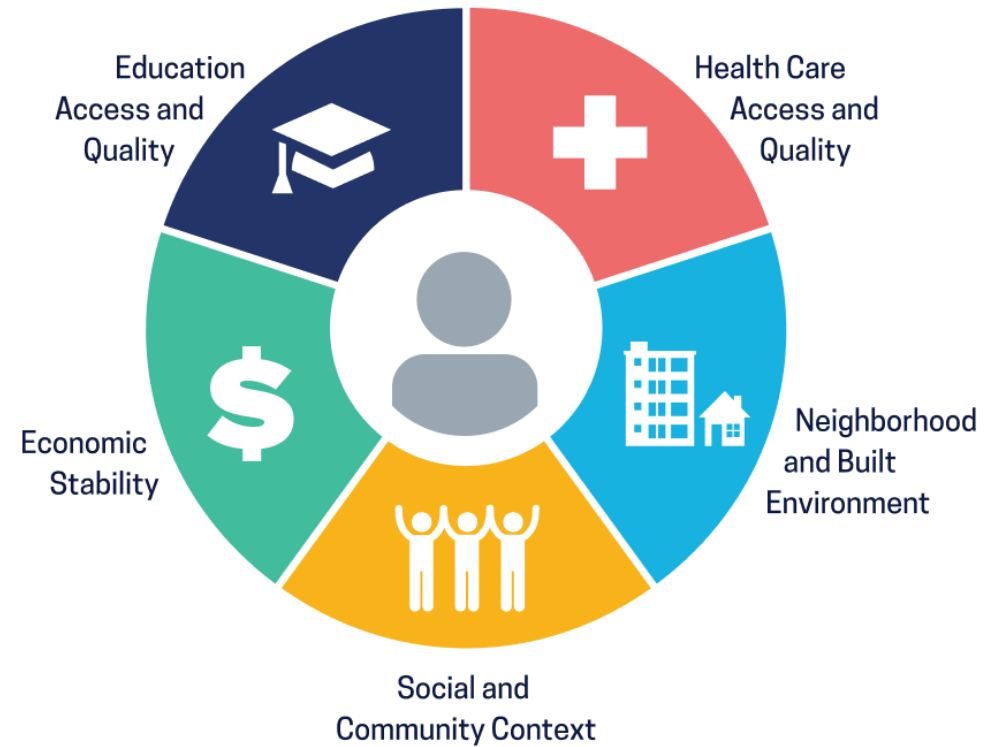
*NETWORKING CAFÉ: COMMUNITY CONSORTIUM PLAN  
HOSTED BY THE HEALTHY START TA & SUPPORT CENTER AT NICHQ*

**NICHQ**  
National Institute for  
Children's Health Quality

HEALTHY  
**start**  
TA & SUPPORT CENTER



# Social Determinants of Health



Social Determinants of Health  
Copyright-free

 Healthy People 2030

# NOFO Requirements:

- BE BASED UPON RESULTS OF A COMMUNITY NEEDS ASSESSMENT AND ENVIRONMENTAL SCAN **that identifies and prioritizes SDOH causes of disparities** IN PERINATAL OUTCOMES IN THE PROJECT AREA.
- BE **community-driven** AND ADDRESS THE FACTORS AND CONDITIONS **beyond clinical care** THAT CONTRIBUTE TO DISPARITIES IN PERINATAL OUTCOMES.
- DESCRIBE **strategic partnerships** AND **strategies to address the “upstream factors”** and **unique SDOH** CONTRIBUTING TO DISPARITIES IN PERINATAL OUTCOMES WITHIN THE PROJECT AREA.
- INCLUDE A **minimum of five performance measures** CORRESPONDING TO PLAN ACTIVITIES.
- HS PROJECTS ARE EXPECTED TO **collaborate with their Community Consortium members, HRSA, and the HS TASC** TO REVISE AND FINALIZE THEIR PLANS
- THE COMMUNITY CONSORTIUM SHOULD **regularly report out/disseminate information** TO COMMUNITY MEMBERS AND PARTNERS ON THE IMPLEMENTATION OF THE HS PROJECT OVERALL, THE PLAN AND PROGRESS MADE TOWARDS ACHIEVING GOALS/OBJECTIVES OF THE PLAN.

# Grantee Example: Broward Black Babies Matter

## *CHOSEN SDOH:*

### HEALTH CARE ACCESS & QUALITY

SPECIFICALLY: 1. ACCESSING EARLY PRENATAL CARE; 2. HAVING ADEQUATE PRENATAL CARE; AND 3. INCREASING HEALTH LITERACY AROUND REPRODUCTIVE HEALTH



## *STRATEGIES:*

- HIRE AND TRAIN COMMUNITY DOULAS
- DEVELOP AND IMPLEMENT A CLINIC-BASED GROUP PRENATAL PROGRAM
- EDUCATE PREGNANT AND PARENTING WOMEN, WOMEN OF REPRODUCTIVE AGE AND THEIR SOCIAL NETWORKS ABOUT SELF-ADVOCACY IN HEALTH SETTINGS
- ESTABLISH AND SUPPORT A COMMUNITY ADVISORY COUNCIL
- CONDUCT A NEEDS ASSESSMENT

# Introductions

In the chat box, please share your

- NAME
- HEALTHY START PROJECT NAME AND LOCATION
- ROLE OR TITLE





*NETWORKING CAFÉ: COMMUNITY CONSORTIUM PLAN  
HOSTED BY THE HEALTHY START TA & SUPPORT CENTER AT NICHQ*



# Discussion

---

**Have you completed your needs assessment and/or environmental scan?**

**If so, have you identified an SDOH contributing to disparities in perinatal outcomes in your community?**

---

# In what ways is/will your planning process community-driven?

---

---

**What struggles are you currently facing regarding the community consortium planning process?**

---





# Thank you!

*NETWORKING CAFÉ: COMMUNITY CONSORTIUM PLAN  
HOSTED BY THE HEALTHY START TA & SUPPORT CENTER AT NICHQ*

**NICHQ**  
National Institute for  
Children's Health Quality

**HEALTHY**  
**start**  
TA & SUPPORT CENTER

