

Welcome!

We are so glad you are here!

We will get started shortly.
In the meantime, we invite you to intentionally enter this space.



Silence your cell phone



Stretch



Close the door



Take a few deep breaths



Close browser windows



Emotionally release your to-do list



Check your audio and video



Take a bio break

Infant Health Equity Supplemental Funding Webinar

Wednesday, November 17, 2021 || 2:00pm to 4:00pm ET





Infant Health Equity Supplemental Funding Webinar

November 17, 2021



Agenda

Housekeeping	Tess Pritchard, NICHQ
Welcome	Kenn Harris, NICHQ
Grantee Updates	All
Action Plan Overview	Ronda Zakocs, Insight for Action
Breakout Workgroup: Action Plan Overview Feedback	All
Debrief	All
Breakout Workgroup: Worksheet and Template Packets Feedback	All
Debrief	All
Next Steps	Tess Pritchard, NICHQ

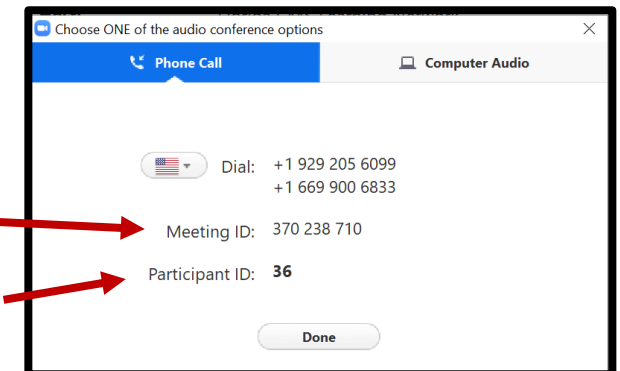
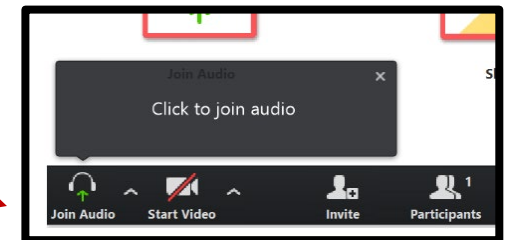
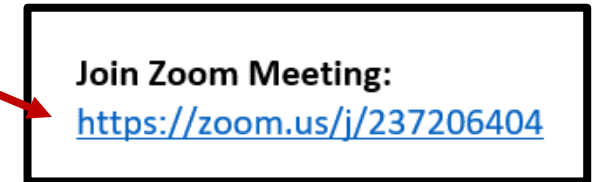
Meeting Logistics



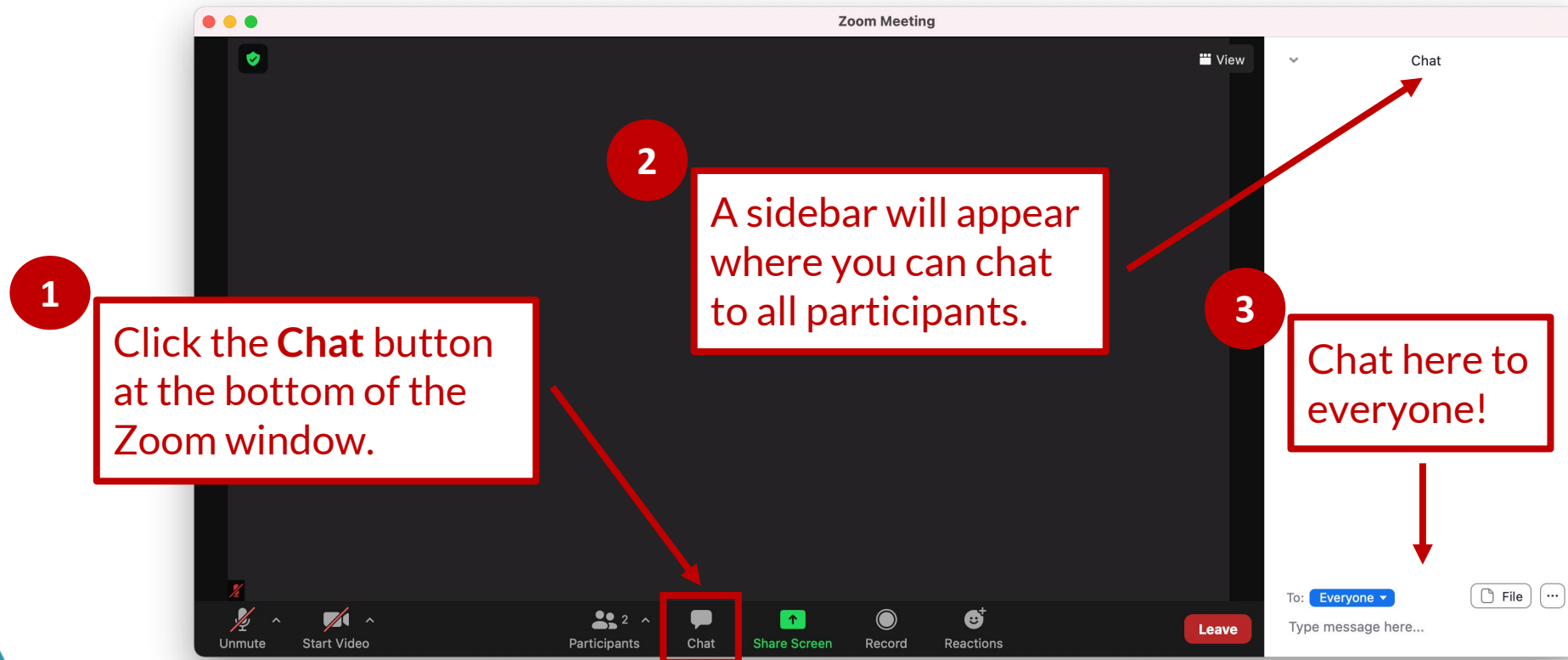
- This session is being recorded.
- All participants are muted upon entry. We ask that you remain muted to limit background noise.
- Members are encouraged to participate in the discussion by typing your comments or asking questions using the chat box.

Connecting to the Audio Conference

- Join the Zoom Meeting by **clicking the Zoom Meeting link** & launching the Zoom application
- An audio conference box will appear
 - If you do not see the box, click **'Join Audio'**
- From the audio conference box, select **'Phone Call'** or **'Computer Audio'**
 - If using the phone:
 - Dial one of the given numbers next to **"Dial"**
 - You will be prompted to enter the **Meeting ID**
 - Then you will be prompted to enter the **Participant ID**



How to Chat





Welcome

Kenn Harris,
Healthy Start TA & Support Center



Grantee Updates

Please provide a 60 second update on the status of your environmental scan and any other activities you have undertaken so far.



Action Plan Overview

Ronda Zacoks,
Insight for Action





Our Charge

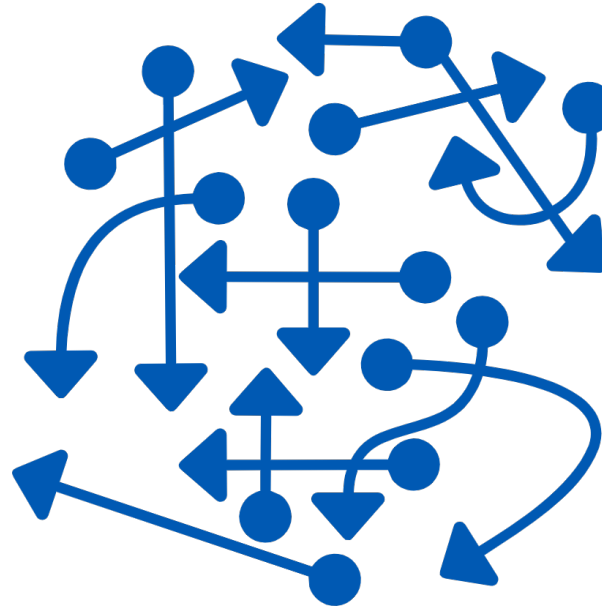
“By health inequities, we mean gaps that are **unjust, avoidable, unnecessary and unfair: They are neither natural nor inevitable.** Rather, they are produced and sustained by deeply entrenched social systems that intentionally and unintentionally prevent people from reaching their full potential. Inequities cannot be understood or adequately addressed if we focus only on individuals, their behavior or their biology. We have the opportunity and the obligation-to do better, and to achieve more equitable outcomes.”

AMA & AAMC – Advancing Health Equity: A Guide Language, Narrative and Concepts

Why design an action planning toolkit?



We want to **improve** infant health equity



Yet, determining which structural & social determinants of health and upstream solutions to shift conditions that are holding infant health inequities in place is **difficult**



Toolkit designed to create a **blueprint** to navigate the complexity of shifting social determinants of health to increase our chances of improving infant health equity

Our Principles to Guide the Action Planning Toolkit Design

Borrow best ideas
from others

Co-create with
Healthy Start
grantees

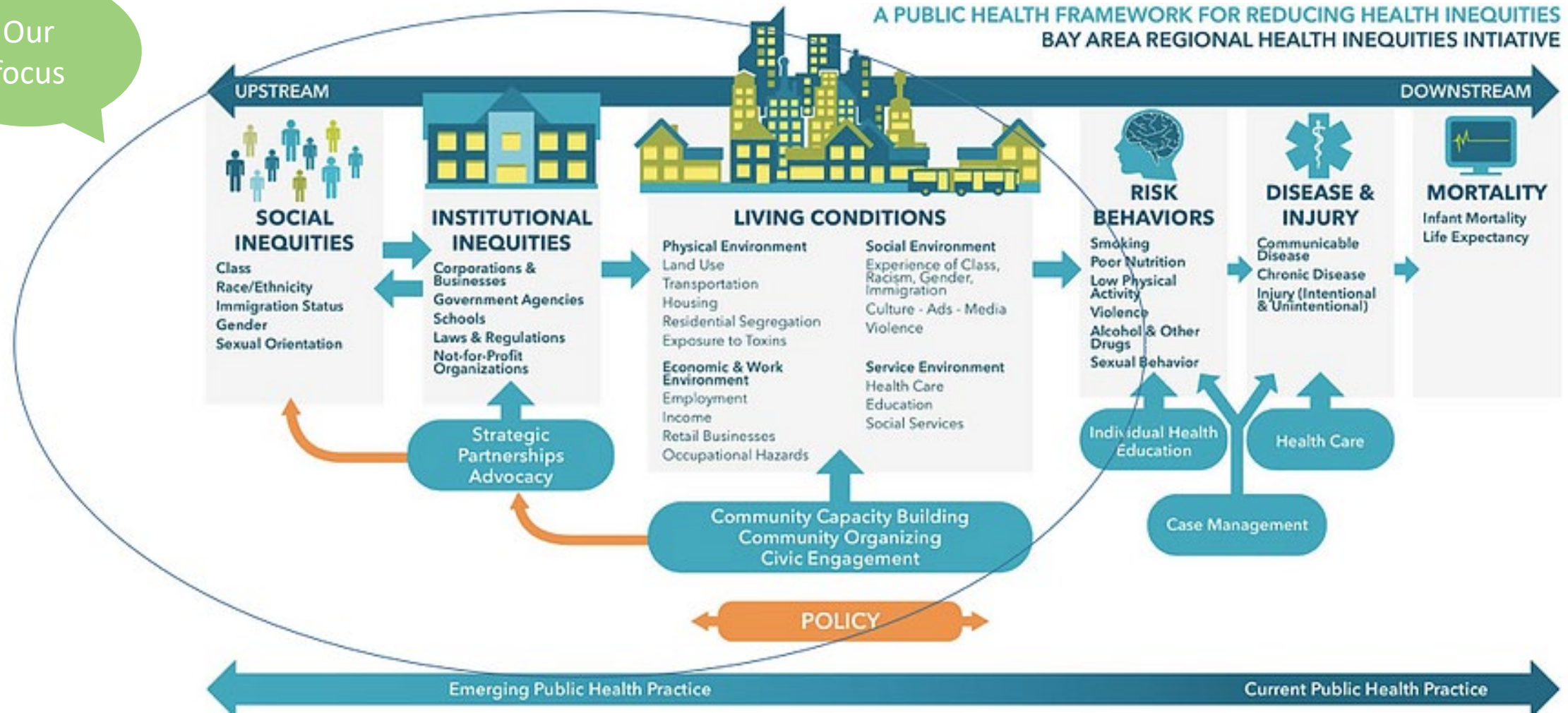
Keep it simple

Focus on shifting
structural conditions
through upstream
solutions*

Make accessible for
community
engagement*

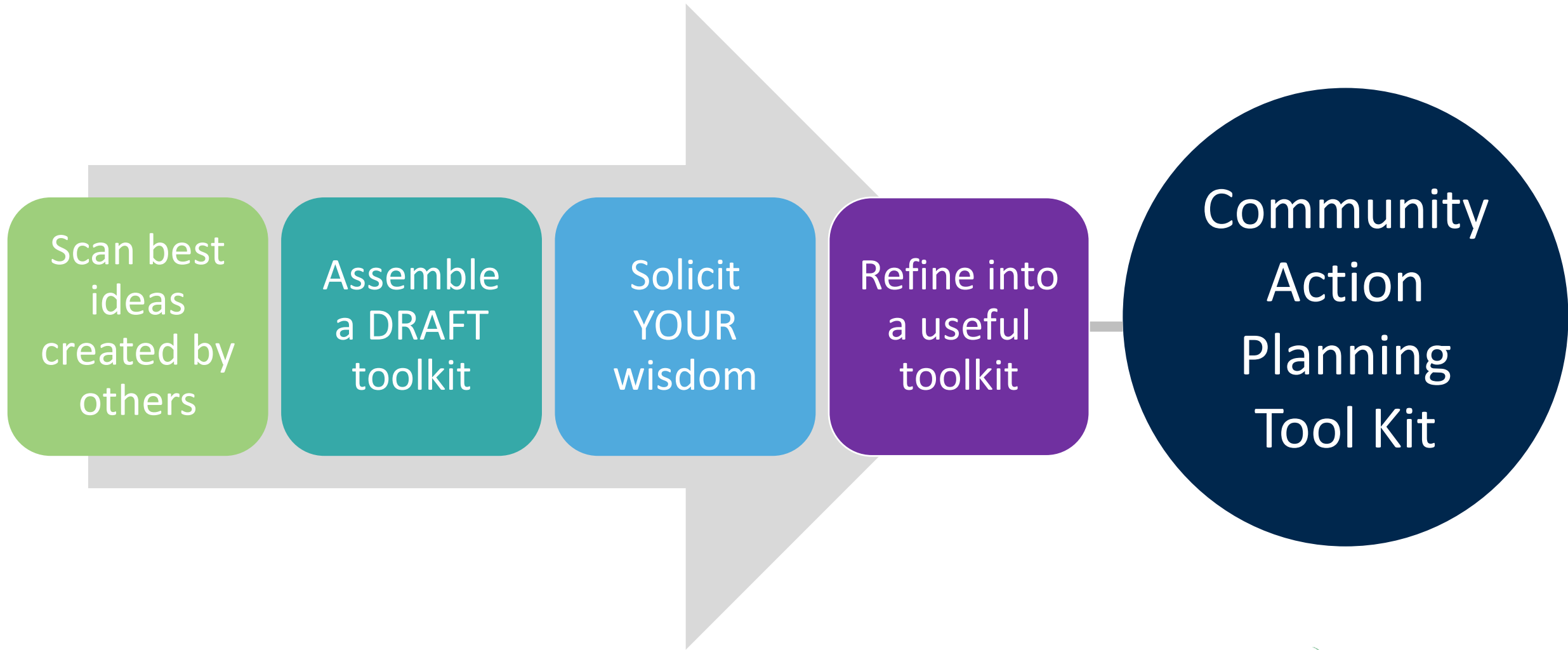
Focus on shifting social determinants of health (SDoH) through upstream solutions

Our focus



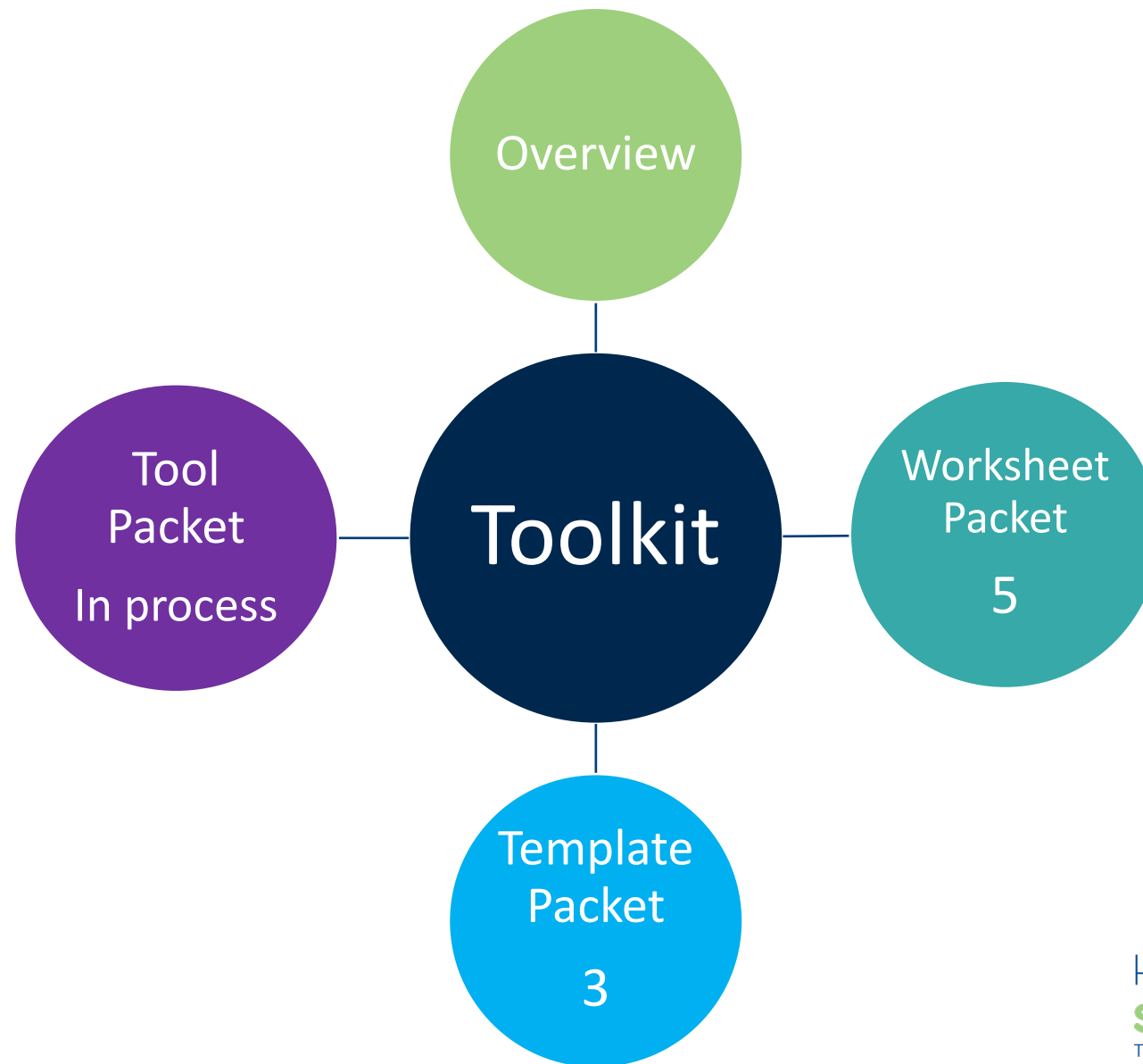
<https://www.barhii.org/barhii-framework>

Our Process for Designing the Action Planning Toolkit





What's Inside the Action Planning Toolkit



FROM ACTION PLANNING TO IMPROVING INFANT HEALTH EQUITY



ACTION PLANNING ROADMAP



1 Get the team ready

Who is our planning team, and what processes will guide action planning?

Worksheet #1: 16 questions

Tools: Community Engagement, Group Decision-Making



2 Begin with end in mind

What is our Healthy Start vision for whom and where?

Worksheet #2: 4 questions

Sources of information: Healthy Start program documents, Infant Equity supplemental grant proposal, and needs assessment

Tool: Vision Statement



3 Conduct an environmental scan

What social determinants of health (SDoH) impact infant health disparities in our service area?

Source of information: Results from environmental scan



4 Prioritize social determinant of health (SDoH)

What is the most important SDoH to address now?

Worksheet #3: 3 questions

Source of information: Results from environmental scan

Tools: Community Engagement, Group Decision-Making



5 Visualize success

What is our desired, future state for our priority SDoH?

Worksheet #4: 4 questions

Source of information: Worksheet #3 Prioritize SDoH

Tools: Community Engagement



6 Set strategic direction

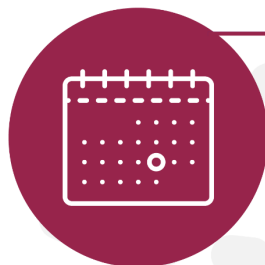
What upstream strategies will we implement to tackle our priority SDoH?

Worksheet #5: 2 questions

Template #1: Strategy Map

Sources of information: Worksheet #3 (Prioritize SDoH) and Worksheet #4 (Visualize Success)

Tools: Upstream Strategies



7 Develop work plan

What actions are required to successfully execute strategies in the first six months?

Template #2: A matrix for each strategy that lays out action steps, responsibilities, required resources, expected completion dates & barriers, and status updates.

Source of information: Worksheet #5 (Set strategic direction)

Tools: Milestone Tracking, Adaptive Action



8 Build the action plan

How will we communicate and hold ourselves accountable for carrying out the plan?

Template #3: A visual, concise template that lifts up the most important elements of the action planning process.

Sources of information: Worksheets #1 through #6

Breakout Workgroup: Action Plan Overview Feedback

Debrief

Breakout Workgroup: Worksheet and Template Packets Feedback

Debrief



Next Steps

Tess Pritchard
Healthy Start TA & Support Center



*Please provide further feedback on the
Action Plan Overview, and the
Worksheets and Templates Packets
through GoogleDocs by Monday,
November 22 at 12 p.m. ET.*

Next IHE Supplement Sessions:

Infant Health Equity Drop-In

Wednesday, December 1st from 2-3 pm ET

IHE Webinar

Wednesday, December 8th from 2-4 pm ET

Satisfaction Survey

Healthy Start IHE Supplement CoLab Group

- Connect with your fellow IHE Supplement recipients on the Healthy Start IHE Supplement CoLab Group!
- Consider introducing yourself and the work you are doing, sharing a tool or a resource, or asking your peers a question.
- All Project Directors have a Colab Account. If you have any trouble accessing the platform, please email healthystart@nichq.org.
- If Project Directors would like to add any additional staff members to the IHE Supplement CoLab Group, please email healthystart@nichq.org.





Thank You!