

Welcome!

We are so glad you are here!

We will get started shortly.
In the meantime, we invite you to intentionally enter this space.



Silence your cell phone



Stretch



Close the door



Take a few deep breaths



Close browser windows



Emotionally release your to-do list



Check your audio and video



Take a bio break

ROOTT Learning Academy

Thursday, April 14, 2022
3:00pm – 4:30pm ET

The Healthy Start TA & Support Center is operated by the National Institute for Children's Health Quality (NICHQ). This project is supported by the Health Resources and Services Administration (HRSA) of the U.S. Department of Health and Human Services (HHS) under grant number 1 UF5MC327500100 titled Supporting Healthy Start Performance Project.

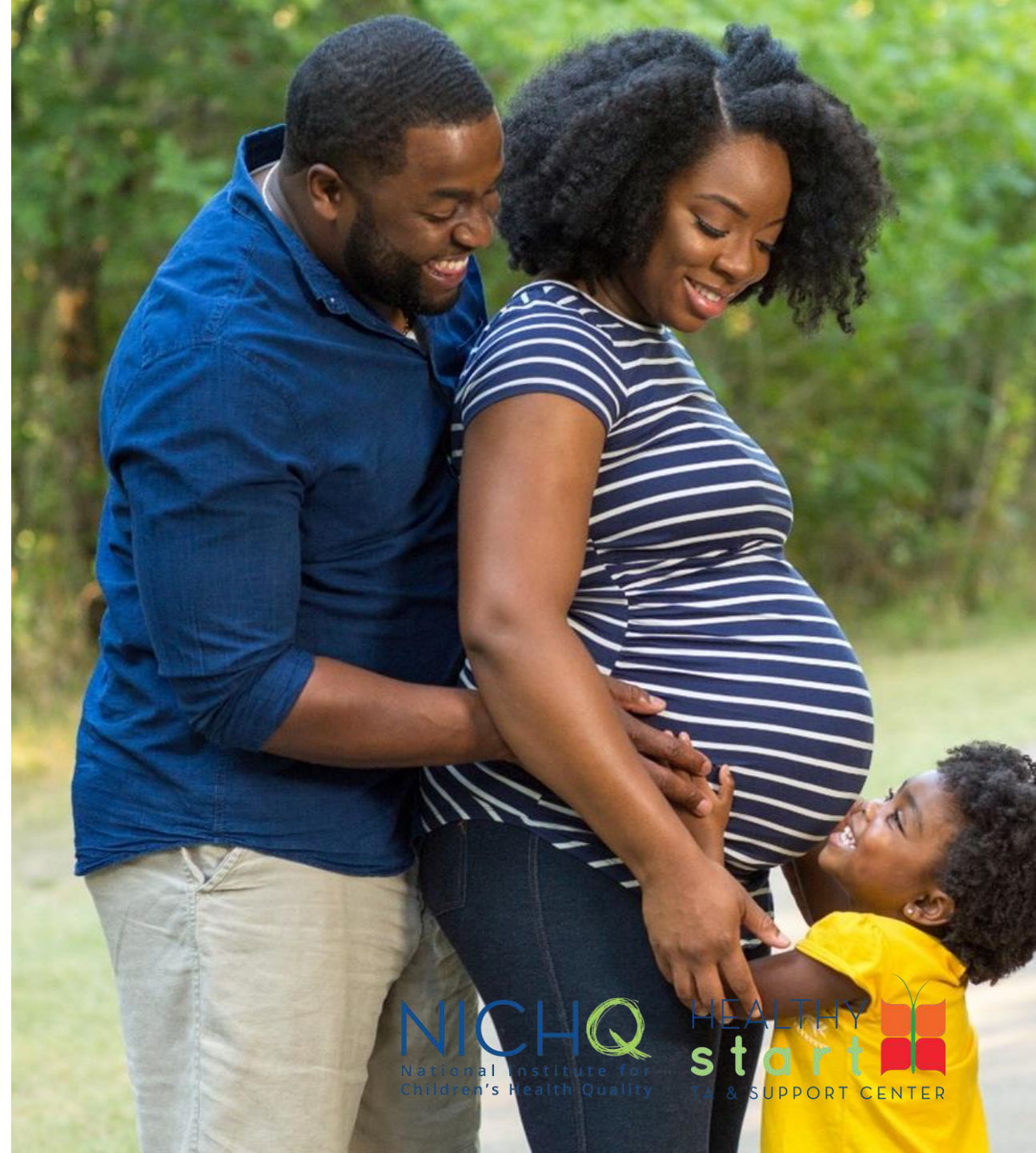
NICHQ
National Institute for
Children's Health Quality

**HEALTHY
start**
TA & SUPPORT CENTER



Agenda

Housekeeping	Lisa Hong Healthy Start TA & Support Center (TASC)
Learning Academy Overview	Danisha Charles TASC
Welcome	Kenn Harris TASC
Web of Causation	Jessica Roach & Dorian Wingard Restoring Our Own Through Transformation (ROOTT)
Q&A	All
Wrap-up	Danisha Charles TASC





This session is being recorded.



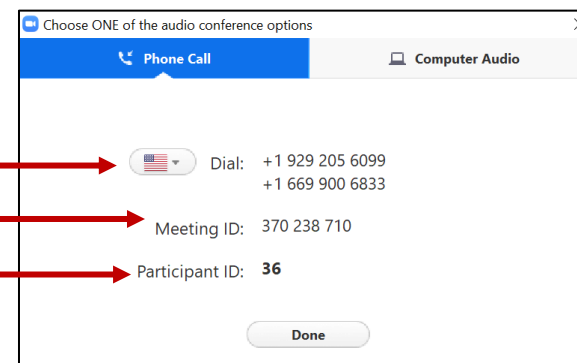
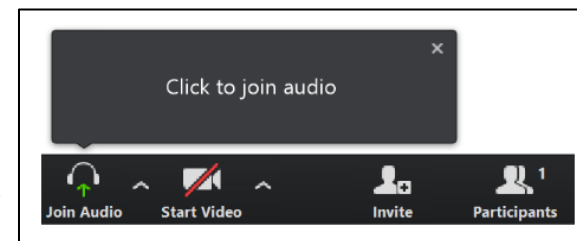
All participants are muted upon entry. We ask that you remain muted to limit background noise.



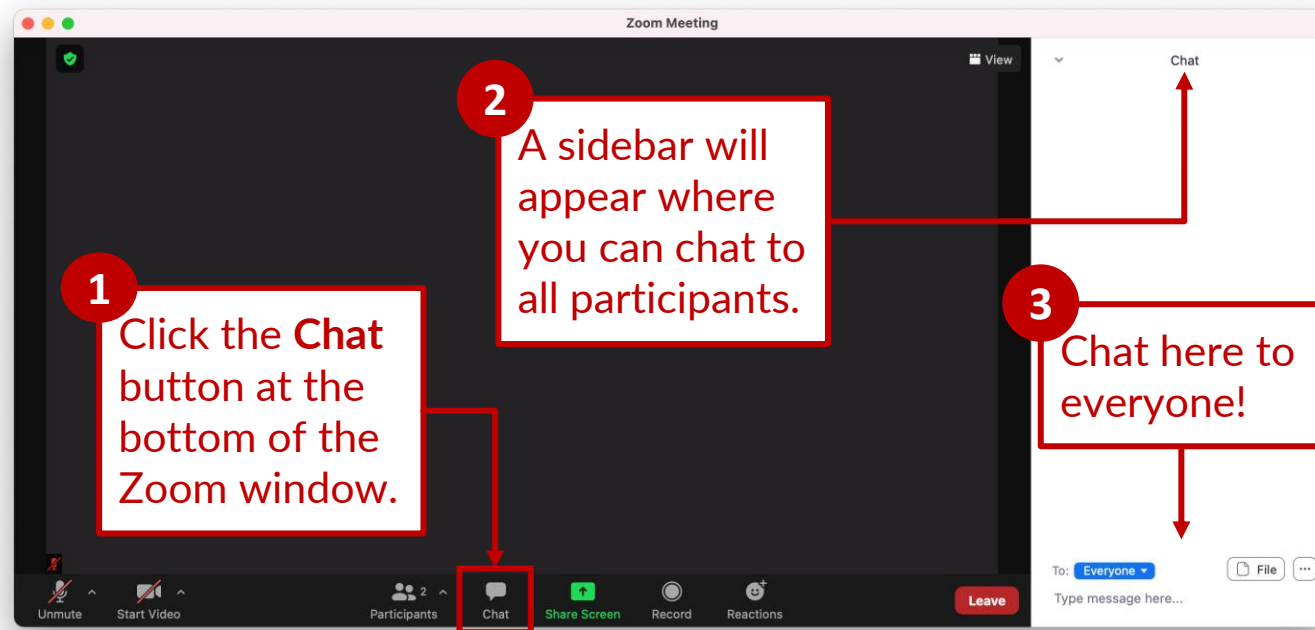
Participants are encouraged to share comments and ask questions using the chat box.

Audio

- After you join the Zoom session, an audio conference box may appear.
 - If you do not see the box, click **'Join Audio'**
- From the audio conference box, select **'Phone Call'** or **'Computer Audio'**
 - If accessing the session audio via phone:
 - Dial one of the given numbers next to **'Dial'**
 - You will be prompted to enter the **Meeting ID**
 - Then you will be prompted to enter the **Participant ID**



Chat





Learning Academy Overview

Danisha Charles

Healthy Start TA & Support Center

ROOTT Learning Academy
Sponsored by the Healthy Start TA & Support Center at NICHQ

NICHQ
National Institute for
Children's Health Quality

**HEALTHY
start**
TA & SUPPORT CENTER



Healthy Start Learning Academies

Healthy Start Learning Academies provide an opportunity for HS grantees to participate in curriculum-based courses on specific topics associated with the four HS approaches and 19 HS benchmarks. Learning Academies build HS staff knowledge and prepare them to apply their learnings to their HS program's day-to-day activities.

Learning Academy Structure

- Participation in monthly virtual interactive sessions
- Suggested readings to support Learning Academy's objectives
- Individual and/or group presentations
- All sessions will be posted on EPIC in an e-learning format for those who cannot attend the live sessions



ROOTT Learning Academy

Goals:

- ❖ To develop a progressive understanding of the Structural Determinants of Health and how they have led to the consequences of unmet Social Determinants of Health.
 - ❖ Examines how policy development and institutional systems have created health inequities that oppress Black families in the maternal & infant health space and beyond.
-

ROOTT Learning Academy Schedule

Session	Time & Date
Session #1	April 14 3:00pm-4:30pm ET
Session #2	May 12 3:00pm-4:30pm ET
Join Fatherhood Talk Tuesday for Session #3	June 14 3:00pm-4:30pm ET
Session #4	July 14 3:00pm-4:30pm ET
Session #5	August 11 3:00pm-4:30pm ET

ROOTT Learning Academy
Sponsored by the Healthy Start TA & Support Center at NICHQ



NICHQ
National Institute for
Children's Health Quality

HEALTHY
start
TA & SUPPORT CENTER

ROOTT Learning Academy Session Topics

Session	Topic
Session 1	Web of Causation
Session 2	Homeowners Loan Corporation, Redlining, and the Destabilization of Black Home Ownership
Session 3	Fatherhood Discussion
Session 4	Reproductive Justice and the Intersection of Police Brutality
Session 5	Grantee Presentations



Welcome

Kenn Harris

Healthy Start TA & Support Center

ROOTT Learning Academy
Sponsored by the Healthy Start TA & Support Center at NICHQ

NICHQ
National Institute for
Children's Health Quality

**HEALTHY
start**
TA & SUPPORT CENTER

ROOTT Learning Academy Deans



***Jessica M Roach, MPH & Dorian L.
Wingard, MPA***

CEO and COO,
Restoring Our Own Through Transformation
(ROOTT)

ROOTT Learning Academy
Sponsored by the Healthy Start TA & Support Center at NICHQ

NICHQ
National Institute for
Children's Health Quality

HEALTHY
start
TA & SUPPORT CENTER

Web of Causation

Jessica Roach & Dorian Wingard

Restoring Our Own Through Transformation
(ROOTT)

ROOTT Learning Academy
Sponsored by the Healthy Start TA & Support Center at NICHQ

NICHQ
National Institute for
Children's Health Quality

HEALTHY
start
TA & SUPPORT CENTER





RESTORING OUR OWN THROUGH TRANSFORMATION

NICHQ Learning Academy 2022

The Web of Causation:
An Analysis of the Structural and Social
Determinants of Health

Jessica M. Roach, MPH
Chief Executive Officer & Partner

Dorian L. Wingard, MPA
Chief Operations Officer & Partner

OBJECTIVES

1. Develop an understanding of the created consequences of the unmet Social Determinants of Health throughout the 400+ year timeline.
2. Establish the intra-connection between Black Family Health Inequity and Black Maternal and Infant Mortality
3. Address the inherent racism of systems, inclusive of health care, and how this impacts Black Family Health and Wellness.

ROOTT ORGANIZATIONAL OVERVIEW

Restoring Our Own Through Transformation (ROOTT) is a collective of concerned Black Families, Families of Color, community members, advocates & interdisciplinary professionals dedicated to decreasing maternal & infant mortality in Ohio.

ROOTT's mission is to comprehensively restore our collective well-being through collaboration, resource allocation, research & empowerment, in order to meet the needs of parents & families within communities.

ROOTT IMPACT STATEMENT

ROOTT accomplishes its mission by providing direct services & public policy advocacy & education, in alliance with local & national stakeholders.

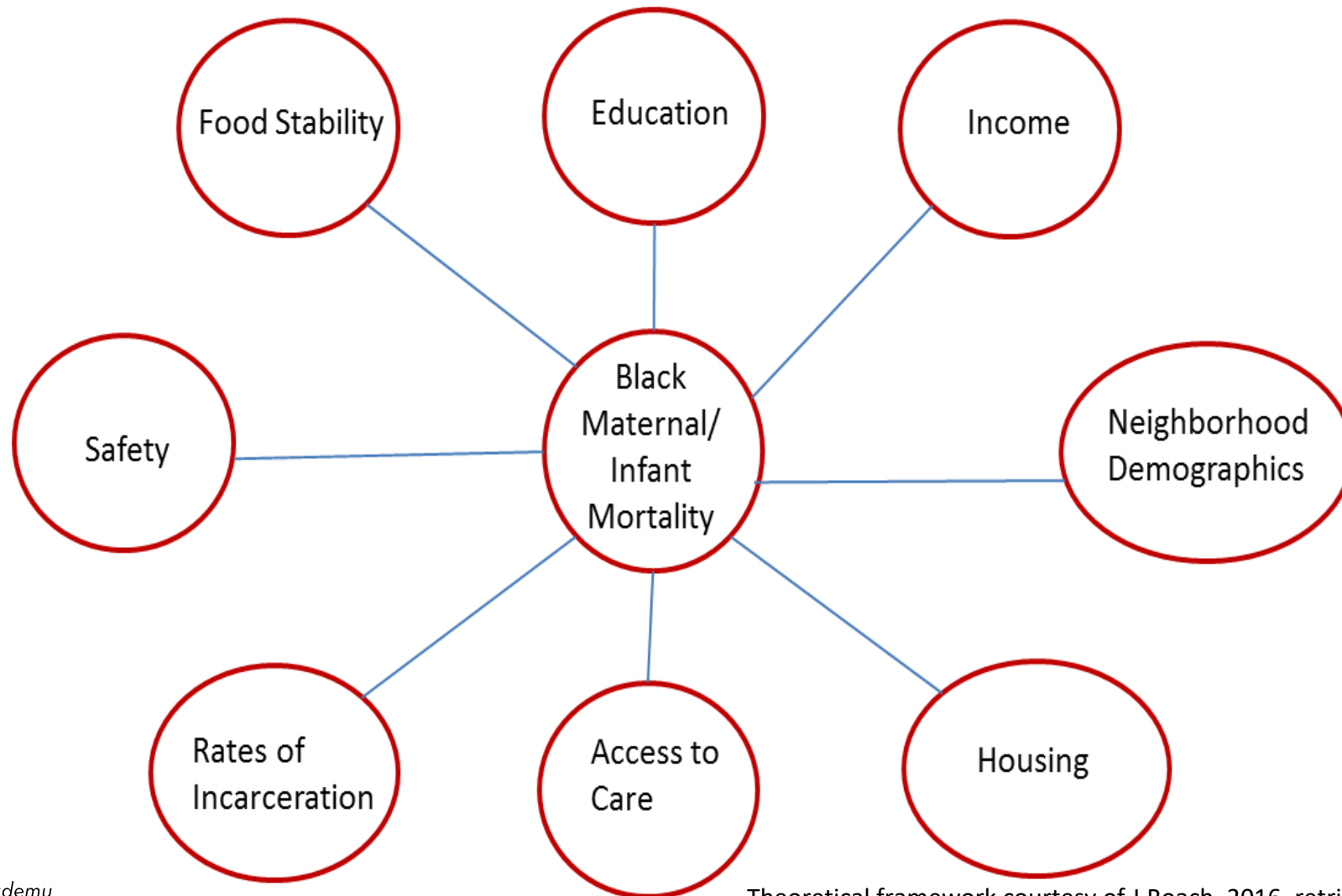
ROOTT goes beyond surface level risk factors regarding marginalized mothers, fathers, infants, & communities in addressing the root causes of these rates.

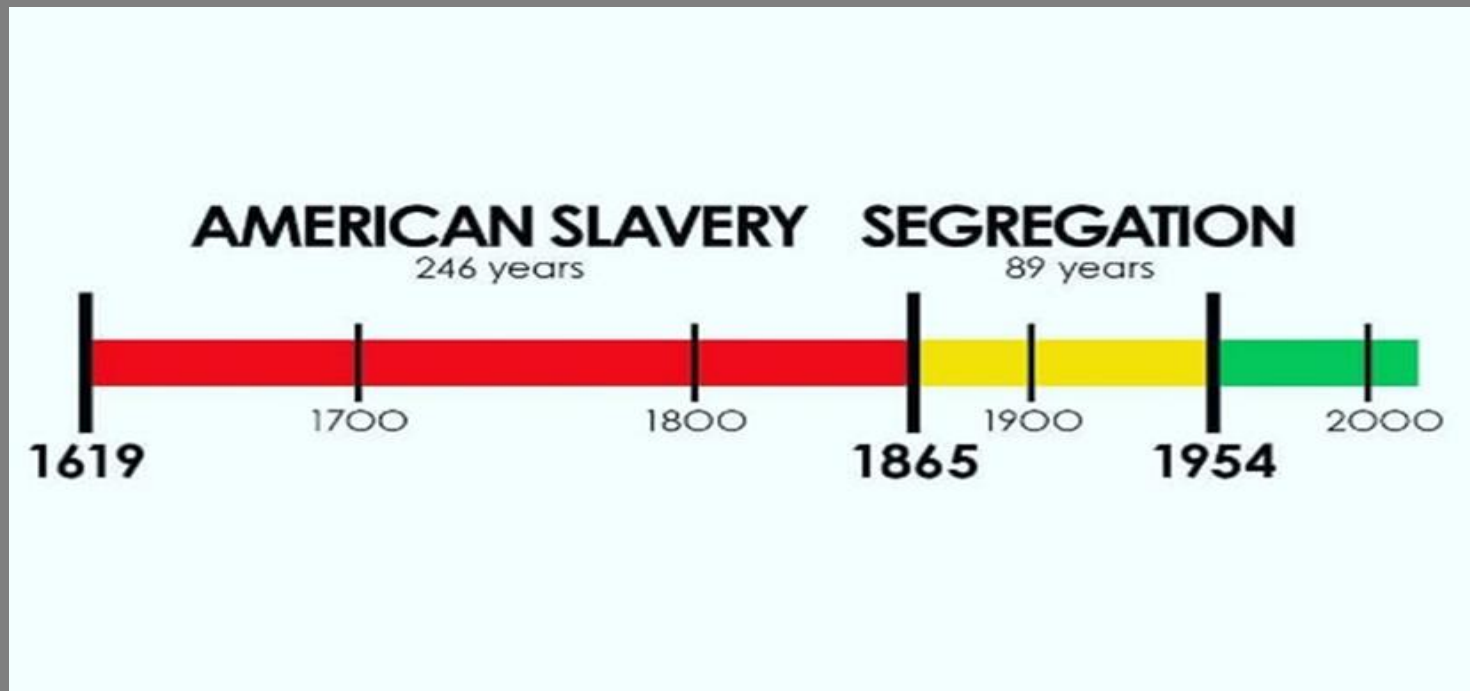
ROOTT directly addresses the Structural Determinants of Health including the institutional racism that creates & sustains the Social Determinants of Health.

ROOTT collaboratively builds quality relationships with families, caregivers, professionals & paraprofessionals aligned with our mission.



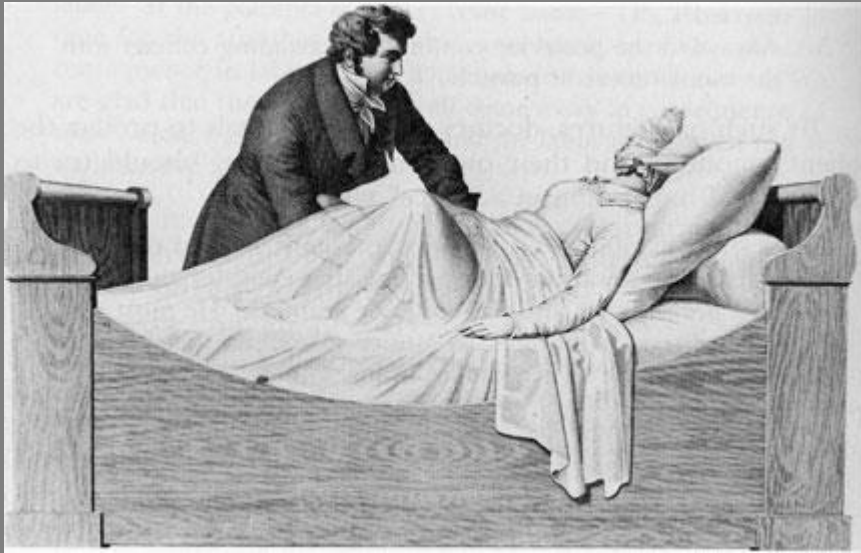
WEB OF CAUSATION SOCIAL DETERMINANTS





Disease is a social and political category imposed on people within an enormously repressive social and economic capitalist system, one that forces disease and death on the world's people"

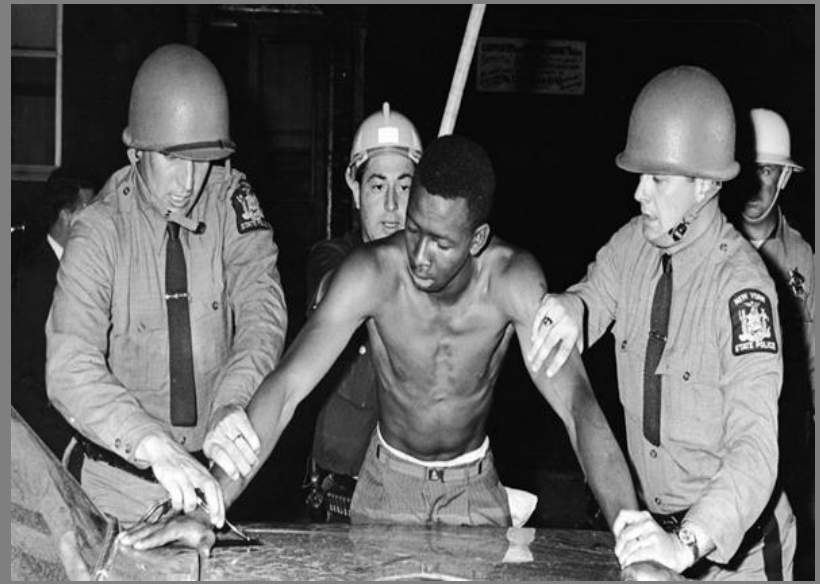
Vicente Navarro, MD. Faculty Director, Johns Hopkins Bloomberg School of Public Health



13th Amendment

Section 1. Neither slavery nor involuntary servitude, except as a punishment for crime whereof the party shall have been duly convicted, shall exist within the United States, or any place subject to their jurisdiction.

Section 2. Congress shall have power to enforce this article by appropriate legislation.



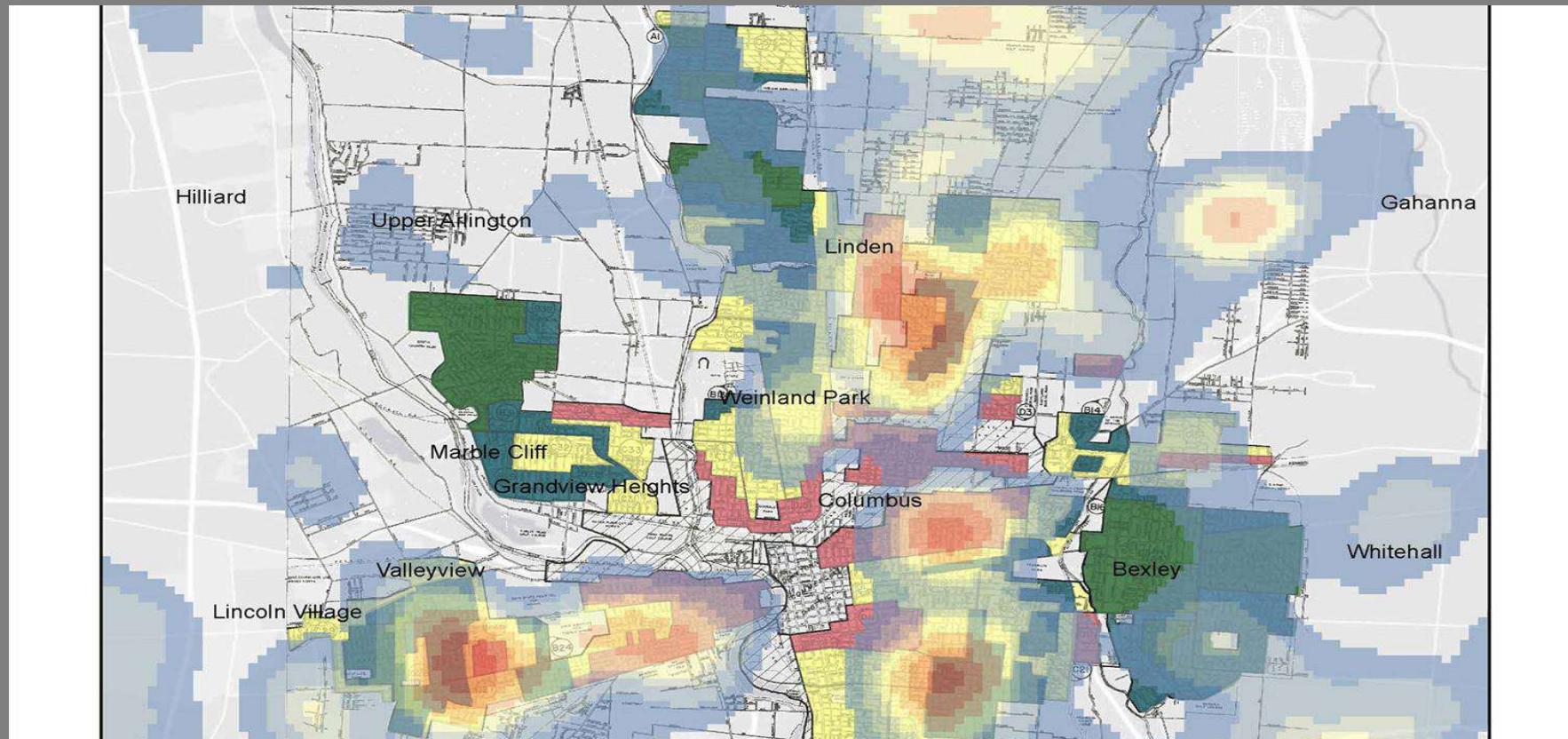
Sheppard- Towner Act-1921

- Created Federal Aid for Maternal Child Health
- Created regulations for training/licensure
- These schools were largely inaccessible to Black women due to cost or segregation
- Traditional immigrant and Black Midwives illegal





Homeowners Loan Corporation



HOLC Grade



A



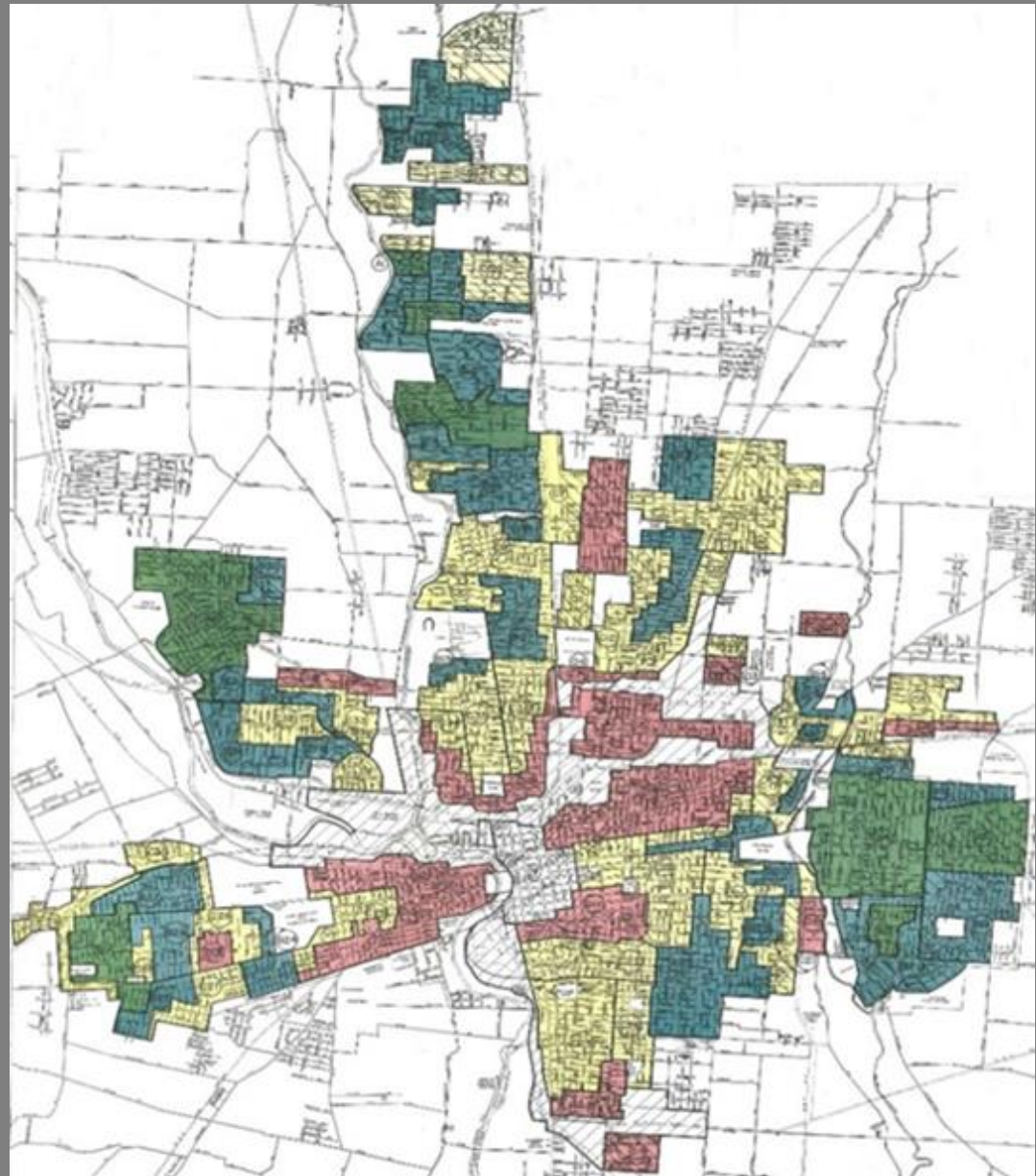
B

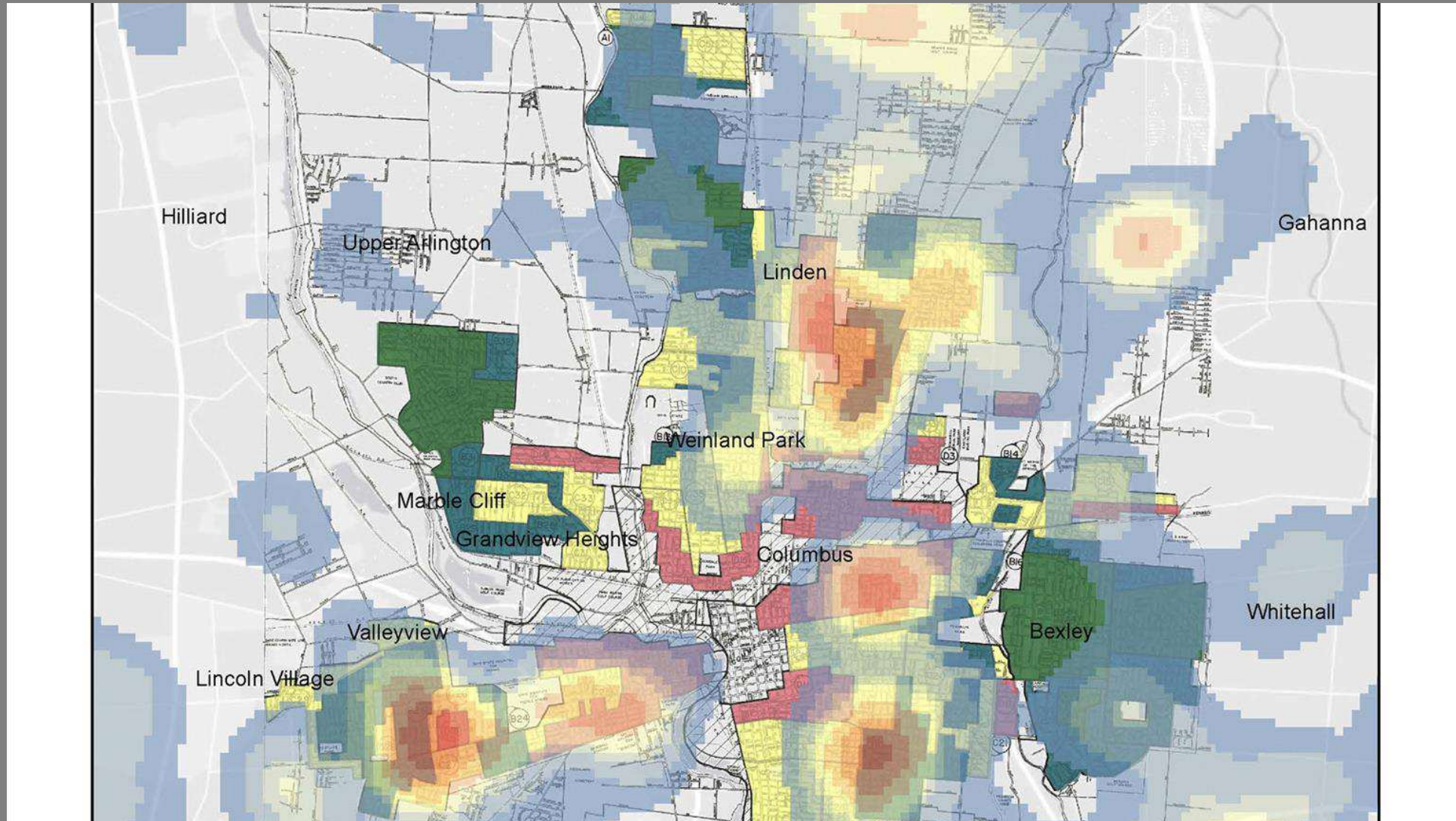


C



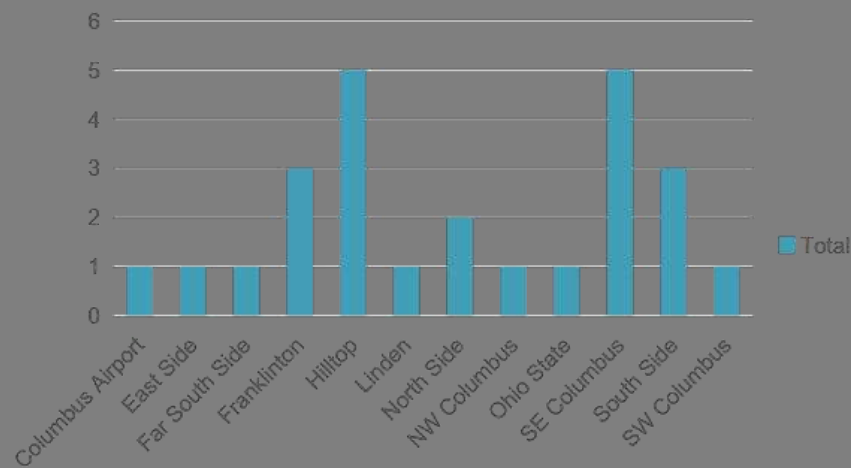
D



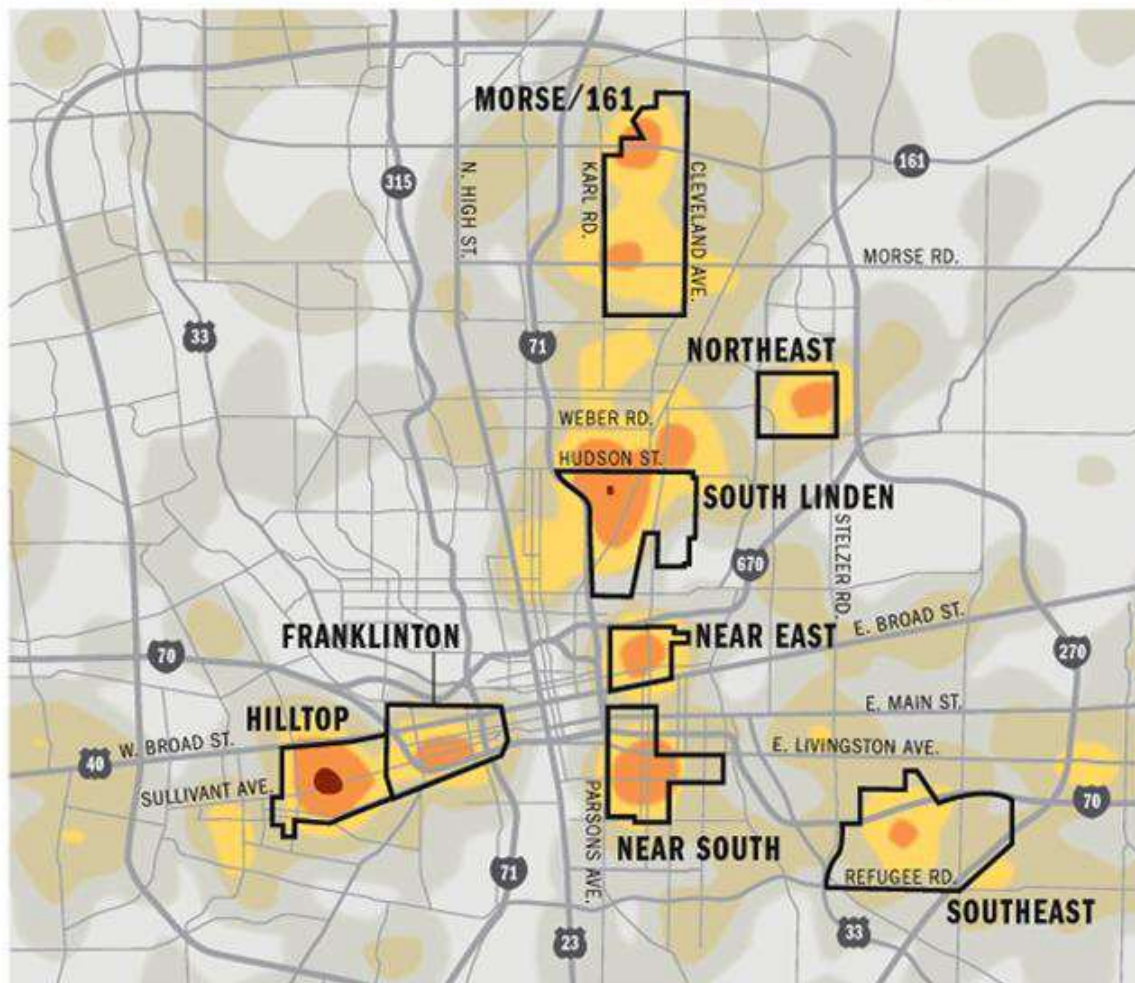
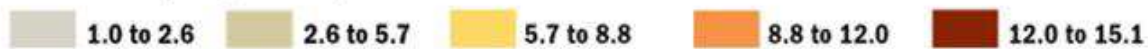


Police Shootings 2015 to 2018 (by Neighborhood) and Neighborhood Infant Mortality Rates

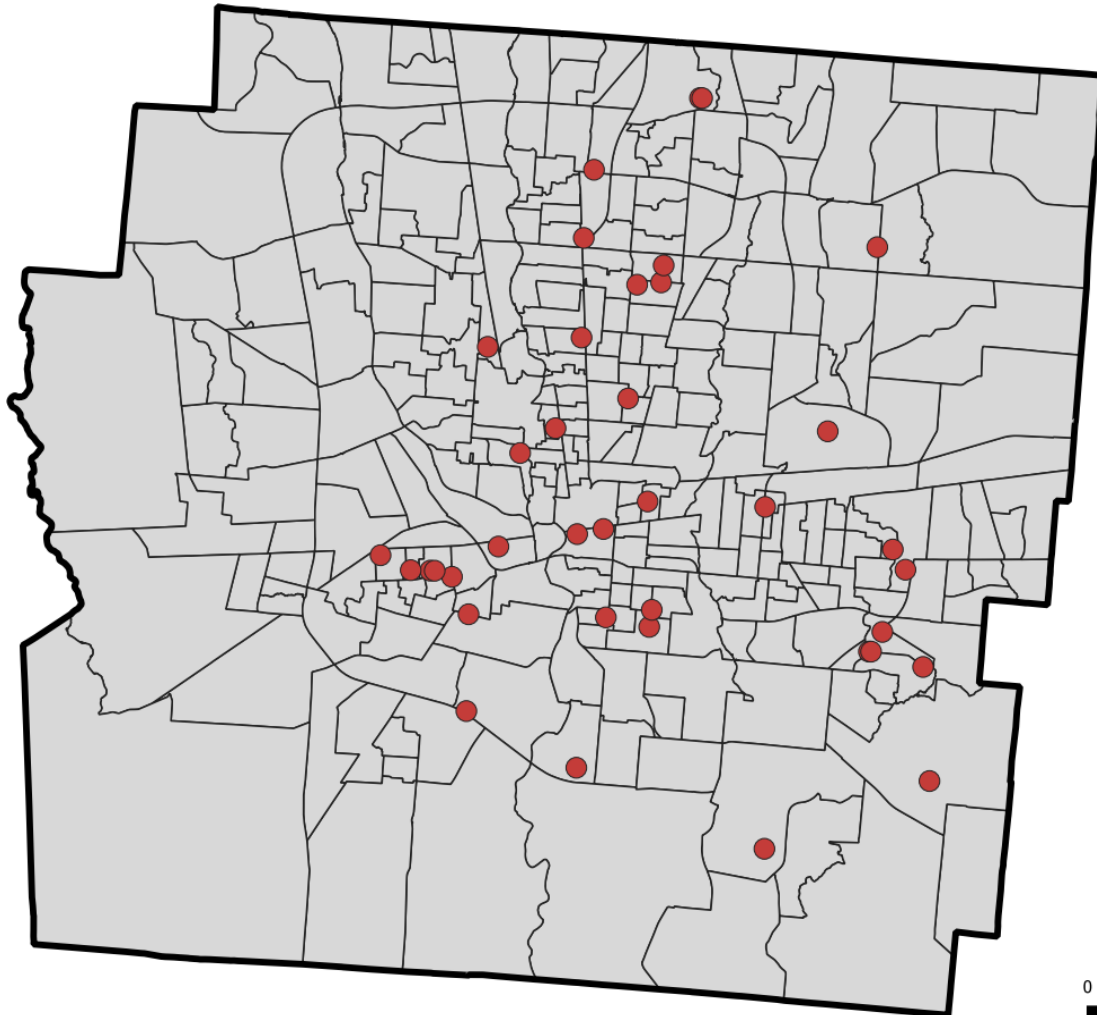
Police Shootings 2015 to 2018



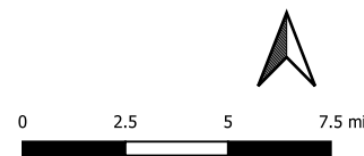
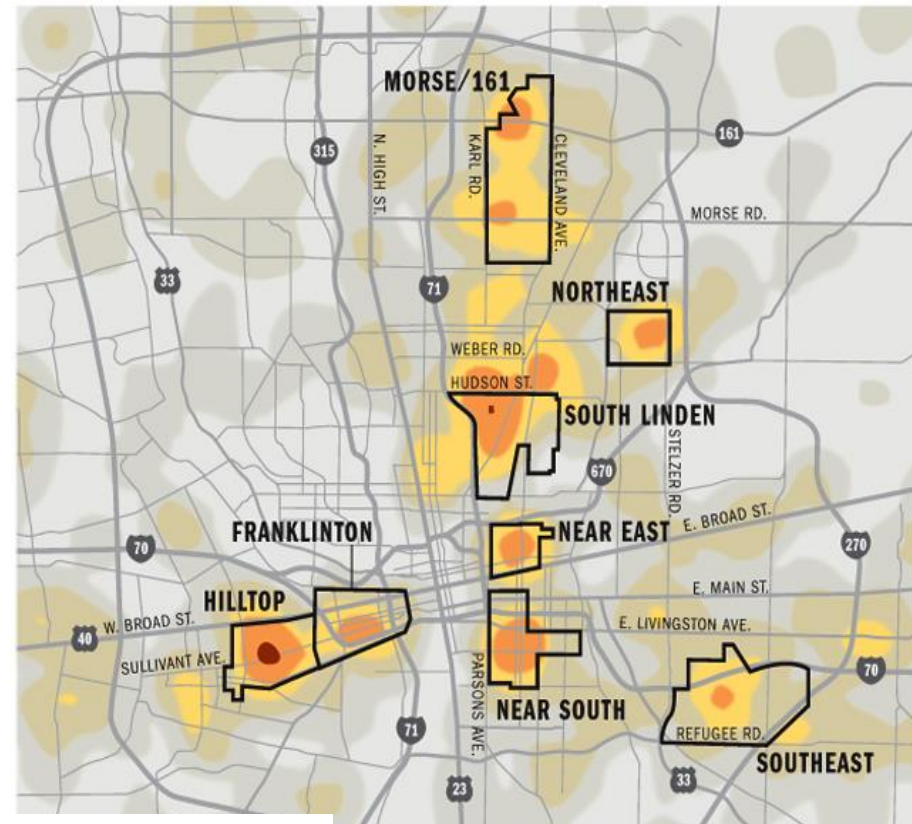
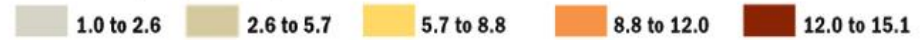
Infant deaths per square mile, 2007-11



Police Shootings in Franklin County 2016-2021 & Original CelebrateOne Areas



Infant deaths per square mile, 2007-11



Near East Side: Shooting Death of Tyree King (13) by Columbus police after pulling out air pistol

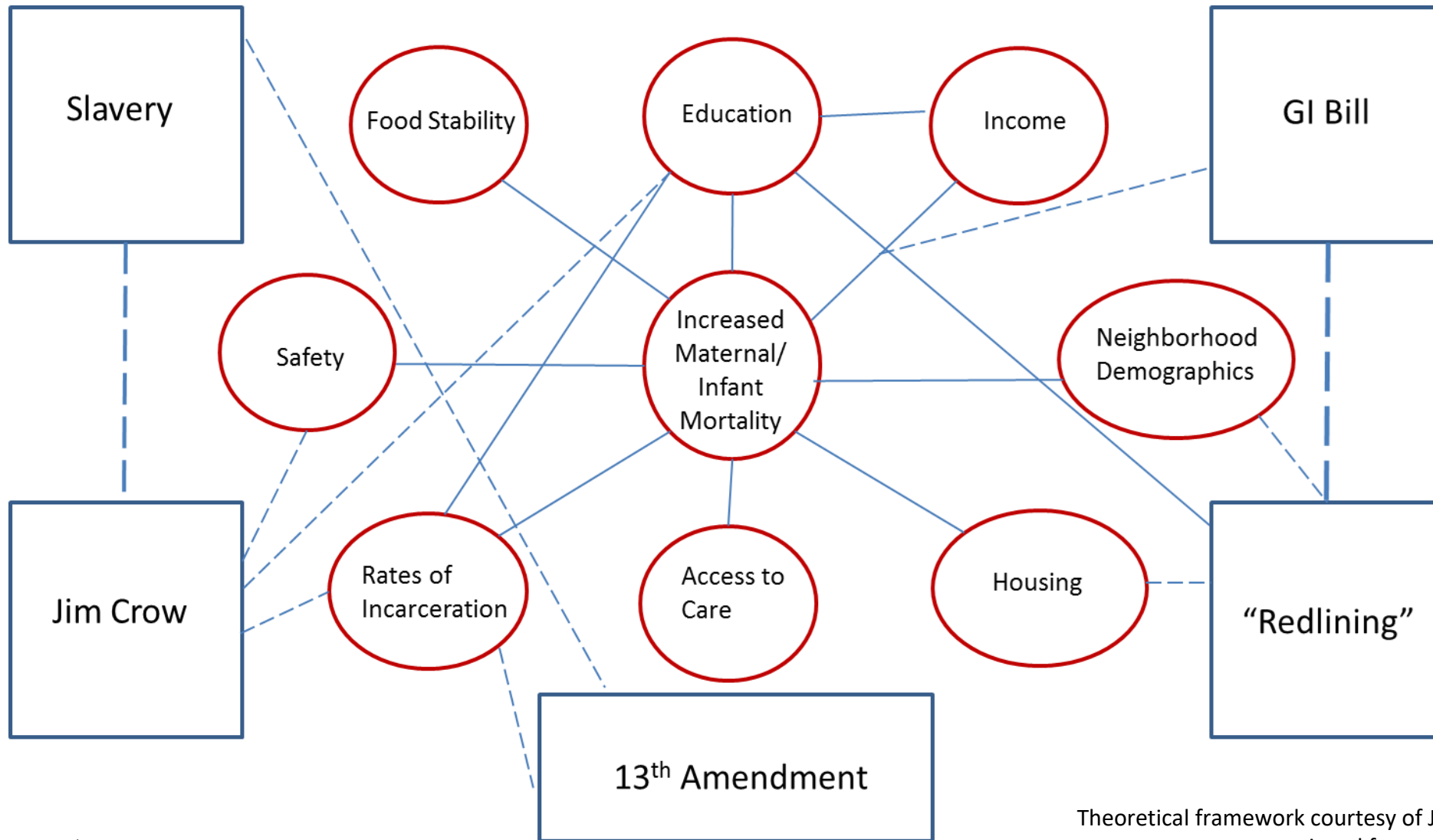


Police Shootings 2015 to 2018 (by Neighborhood) and Neighborhood Conditions (Infant Mortality Rates & Historical Redlining)

- Formerly redlined neighborhoods and areas with the highest infant mortality rates have a disproportionate experience with police violence
- Of 25 police shootings since 2015 in Columbus Ohio
 - 20 (80%) were in the general vicinity of neighborhoods which have been identified as infant mortality hot spot areas
 - 13 (52%) were in areas which were historically redlined
 - Four neighborhoods contained 2/3's (64%) of all police shootings (Hilltop, Franklinton, South Side, SE Side)

WEB OF CAUSATION

STRUCTURAL and SOCIAL DETERMINANTS: IMPACT ON HEALTH



Without addressing, **disrupting**,
and **dismantling** the structural
determinants, we **will not** be able
to address social determinants.

ROLE OF COMMUNITY BASED ORGANIZATIONS:

Restoring Our Own Through Transformation (ROOTT)

- Full Spectrum Doulas as Perinatal Support Persons (Training and Certification)
- Healthcare Providers Training and Continuing Education
- Organizational Consultation
- Policy advisement (State and Federal)
- Public Health Research (Independent and Institutional)

ROOTT PERINATAL SUPPORT DOULAS

- Full Spectrum
- Perinatal Support
- Breastfeeding Education
- CLC certified
- Advocacy
- Informed Decision
- Family centered



This is how
we ROOTT!!

www.roottrj.org



ROOTT Origin Story
NPR Story Corp, 8-2019





BMMA

BLACK MAMAS MATTER ALLIANCE



“At some point, we must acknowledge and address how the foundation of Obstetrics and Gynecology as we know it in the U.S., was built from the stolen knowledge and traditions of Black and Indigenous Women...and used against us through means of rape, sexual assault, pedophilia, eugenics, and genocide. Reproductive Justice is the definition by which we say, WE are taking this back.”

Jessica M. Roach, MPH

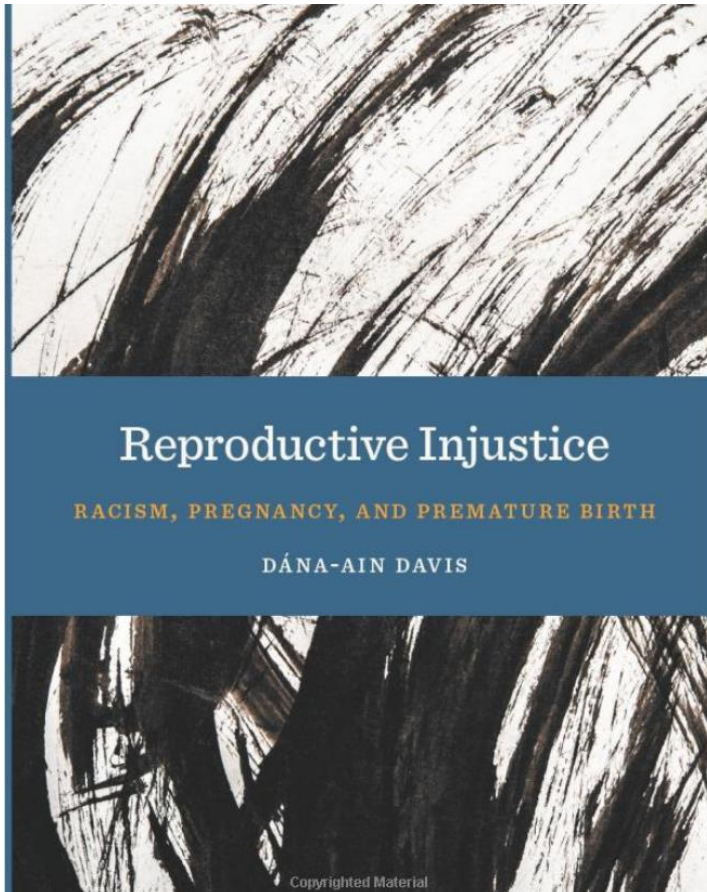
”Race neutral solutions are impotent in the address of intentional, race-specific racism. Consequently, true health equity will certainly change the lives of the oppressed and the oppressor, in ways that may lead to the deconstruction of American inhumanity.”

DL Wingard, MPA

Satisfaction Survey

Your feedback is extremely valuable and will help ensure our offerings meet your support needs!





Reproductive Injustice

By Dana Ain-Davis

The TA & Support Center is pleased to provide one copy of this book to each Healthy Start grantee participating in the ROOTT Learning Academy.

To request a copy for your project, please complete the request form by following the link in the chat box or scanning the QR code.



Next ROOTT Learning Academy: Homeowners Loan Corporation, Redlining, and the Destabilization of Black Home Ownership

Thursday, May 12

3:00pm – 4:30pm ET

NICHQ
National Institute for
Children's Health Quality

HEALTHY
start
TA & SUPPORT CENTER



ROOTT Learning Academy
Sponsored by the Healthy Start TA & Support Center at NICHQ

Upcoming Deadlines & Events

Document can be found on the EPIC website or
at bit.ly/hs-deadlines-and-events

April 2022

Deadlines:

Apr 15 HSMED-II Report (CSV or XML) Due

Events:

- Apr 6 Recruitment & Retention Cohort Meeting #4- R&R cohort members only
- Apr 7 CAN Cohort Meeting #4 - CAN cohort members only
- Apr 12 [Fatherhood Talk Tuesday](#)
- Apr 14 [Learning Academy Session #1](#)
- Apr 19 [2021 Annual Assessment Webinar](#)
- Apr 20 Fatherhood Cohort Meeting #4 - Fatherhood cohort members only
- Apr 21 Evaluation Cohort Meeting #4 - Evaluation cohort members only
- Apr 26 [CIGNAL for Maternal & Child Health in Rural Communities Webinar](#)



Thank you !

ROOTT Learning Academy
Sponsored by the Healthy Start TA & Support Center at NICHQ

NICHQ  HEALTHY 
National Institute for **start**
Children's Health Quality