

Welcome!

We are so glad you are here!

We will get started shortly.
In the meantime, we invite you to intentionally enter this space.



Silence your cell phone



Stretch



Close the door



Take a few deep breaths



Close browser windows



Emotionally release your to-do list



Check your audio and video



Take a bio break

2021 Healthy Start Virtual Grantees' Meeting
*Social Determinants of Health Through a Structural Lens:
The Role of Black Community Based Organizations in Addressing
Black Family Health Inequity*
Wednesday, November 3, 2021 || 3 pm to 4:20 pm ET





Social Determinants of Health through a Structural Lens: The Role of Black Community Based Organizations in addressing Black Family Health Inequity

Breakout Session

Wednesday, November 3

3-4:20 pm ET

The Healthy Start TA & Support Center is operated by the National Institute for Children's Health Quality (NICHQ). This project is supported by the Health Resources and Services Administration (HRSA) of the U.S. Department of Health and Human Services (HHS) under grant number 1 UF5MC327500100 titled Supporting Healthy Start Performance Project.



Agenda

Housekeeping	Kim Sprunck, National Institute for Children's Health Quality (NICHQ)
Welcome & Introduction	Kim Sprunck, NICHQ
Social Determinants of Health through a Structural Lens	Jessica M. Roach & Dorian Wingard, Restoring Our Own Through Transformation (ROOTT)
Q&A	All
Closing	Kim Sprunck, NICHQ





This session is being recorded.



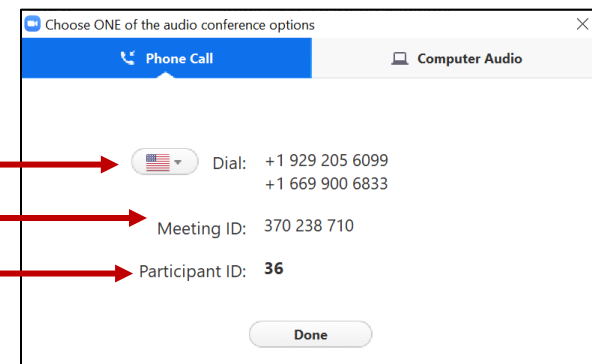
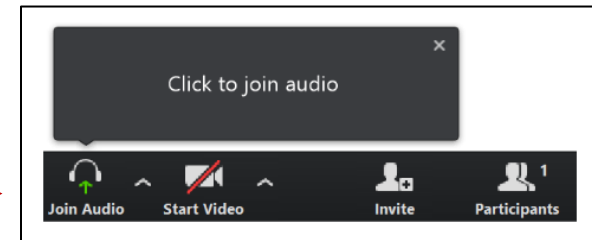
All participants are muted upon entry. We ask that you remain muted to limit background noise.



Participants are encouraged to share comments via the Chat module and ask questions via the Q&A module in Whova (on the mobile app or browser).

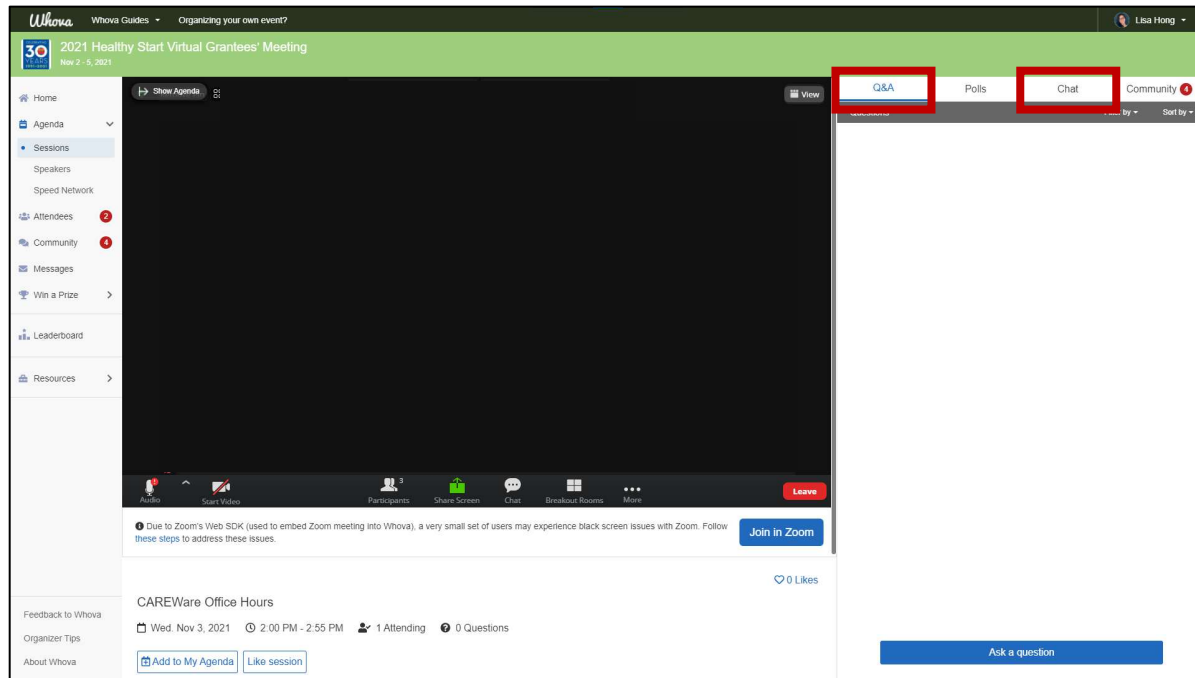
Audio

- After you join the Zoom session, an audio conference box may appear.
 - If you do not see the box, click **'Join Audio'**
- From the audio conference box, select **'Phone Call'** or **'Computer Audio'**
 - If using the phone:
 - Dial one of the given numbers next to **'Dial'**
 - You will be prompted to enter the **Meeting ID**
 - Then you will be prompted to enter the **Participant ID**

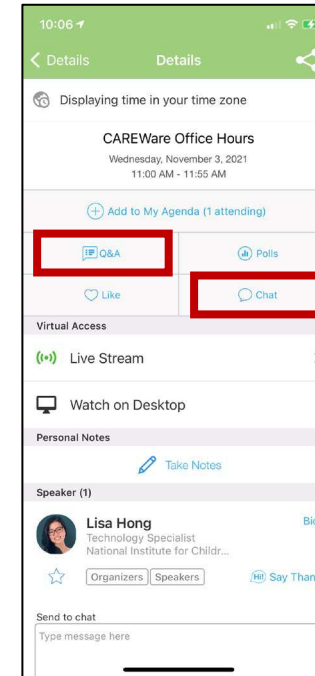


Chat and Q&A modules in Whova

Chrome Browser



Mobile Application



Like what you see?

The Healthy Start TA & Support Center is now active on social media!

1. Take a picture or a screenshot
2. Share on Instagram or Twitter!
3. Don't forget to tag @HS_TASC and @NICHQ and include hashtags #HealthyStartVGM2021 and #HealthyStartStrong

Technical Issues

If you experience any technical challenges with Whova, please email support@whova.com.

Welcome & Introduction

Lina Barrett

Division of Healthy Start and Perinatal Services

#HealthyStartVGM2021
#HealthyStartStrong
@HS_TASC @NICHQ

*Social Determinants of Health Through a Structural Lens
Hosted by the Healthy Start TA & Support Center at NICHQ on November 3, 2021*

NICHQ
National Institute for
Children's Health Quality

HEALTHY
start
TA & SUPPORT CENTER

Welcome to the VGM!

We hope you have been
enjoying today's sessions
so far!

In this breakout, you will:

- Learn the role of transformative evaluation in addressing systemic discrimination and health inequities
- Learn to critically assess the principles of the transformative framework for their evaluation practice
- Learn to identify opportunities to put transformative principles into practice

#HealthyStartVGM2021

#HealthyStartStrong

@HS_TASC @NICHQ

*Social Determinants of Health Through a Structural Lens
Hosted by the Healthy Start TA & Support Center at NICHQ on November 3, 2021*

NICHQ
National Institute for
Children's Health Quality

HEALTHY
start
TA & SUPPORT CENTER



Our Speakers

Jessica M. Roach, MPH,

Chief Executive Officer & Partner
Restoring Our Own Through
Transformation (ROOTT)

Dorian Wingard, MPA

Chief Operations Officer & Partner
ROOTT

#HealthyStartVGM2021

#HealthyStartStrong

@HS_TASC @NICHQ

Social Determinants of Health Through a Structural Lens

Hosted by the Healthy Start TA & Support Center at NICHQ on November 3, 2021

Questions during the session?

Use the Q&A module in the Whova platform and make sure to identify the speaker to whom you are directing your question(s).

Questions will be answered during the session if time permits. Otherwise, questions will be addressed post-session.

NICHQ
National Institute for
Children's Health Quality

HEALTHY
start
TA & SUPPORT CENTER



RESTORING OUR OWN THROUGH TRANSFORMATION

A Black Owned and Operated
Community-Based Public Health
Organization

Jessica M. Roach, MPH
Chief Executive Officer & Partner

Dorian L. Wingard, MPA
Chief Operations Officer & Partner

OBJECTIVES

1. Develop an understanding of the created consequences of the Social Determinants of Health through the 400-year timeline.
2. Establishing “Doula” work as an integral part of the full spectrum and perinatal care team.
3. Addressing bias in healthcare communication as healthcare professionals and understanding how this impacts patient outcomes.



ROOTT ORGANIZATIONAL OVERVIEW

Restoring Our Own Through Transformation (ROOTT) is a collective of concerned Black Families, Families of Color, community members, advocates & interdisciplinary professionals dedicated to decreasing maternal & infant mortality in Ohio.

ROOTT's mission is to comprehensively restore our collective well-being through collaboration, resource allocation, research & empowerment, in order to meet the needs of parents & families within communities.



ROOTT IMPACT STATEMENT

ROOTT accomplishes its mission by providing direct services & public policy advocacy & education, in alliance with local & national stakeholders.

ROOTT goes beyond surface level risk factors regarding marginalized mothers, fathers, infants, & communities in addressing the root causes of these rates.

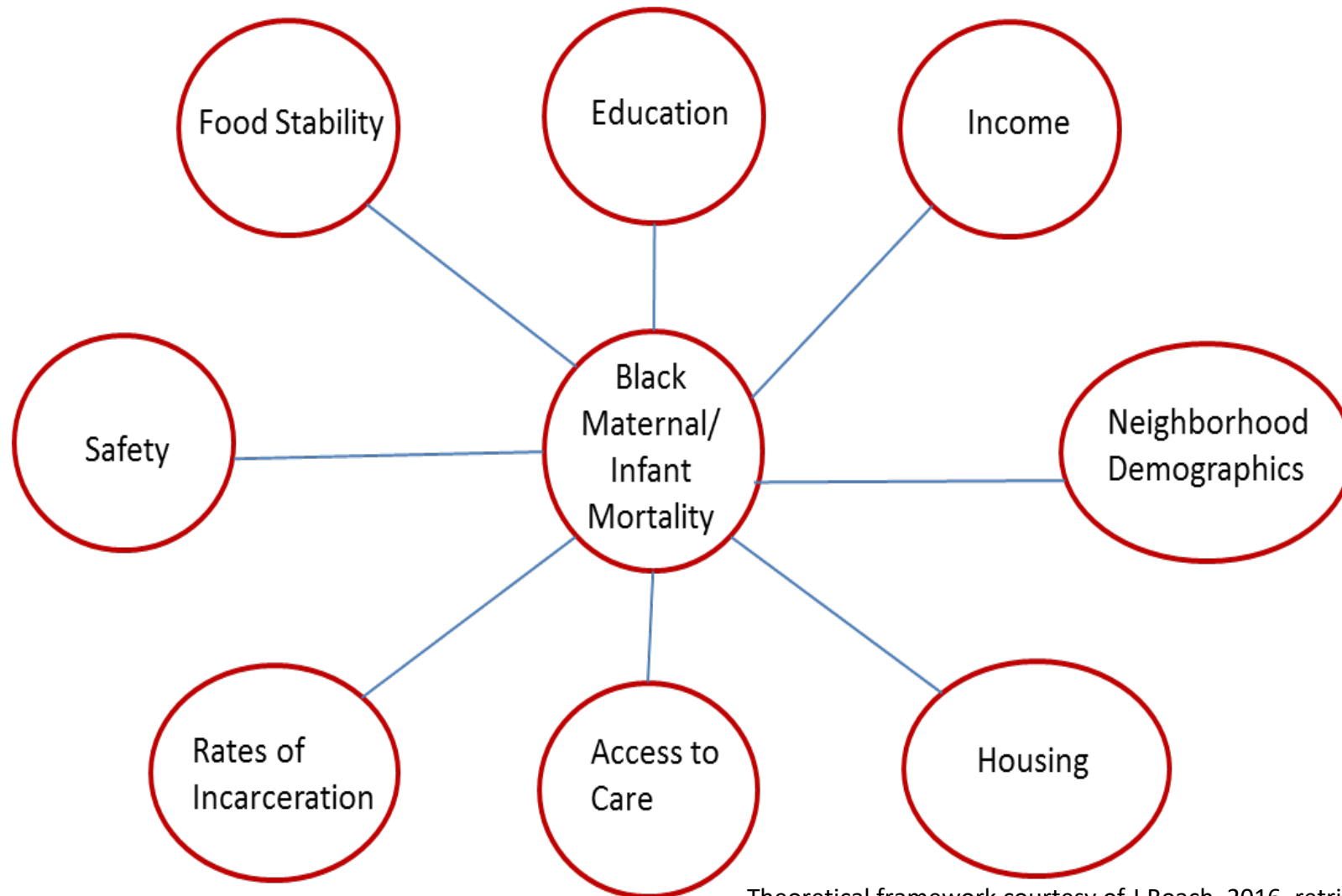
ROOTT directly addresses the Structural Determinants of Health including the institutional racism that creates & sustains the Social Determinants of Health.

ROOTT collaboratively builds quality relationships with families, caregivers, professionals & paraprofessionals aligned with our mission.



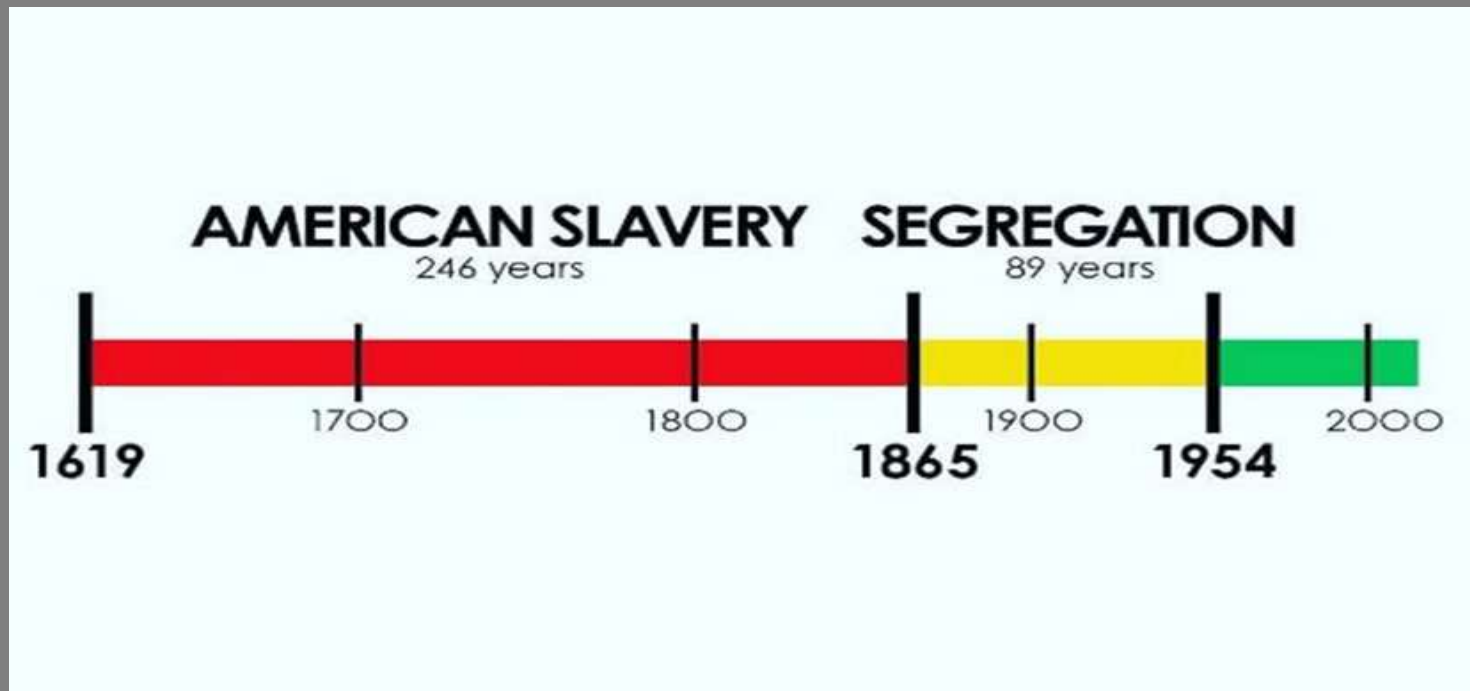


WEB OF CAUSATION SOCIAL DETERMINANTS



Theoretical framework courtesy of J.Roach, 2016. retrieved from www.roottrj.org

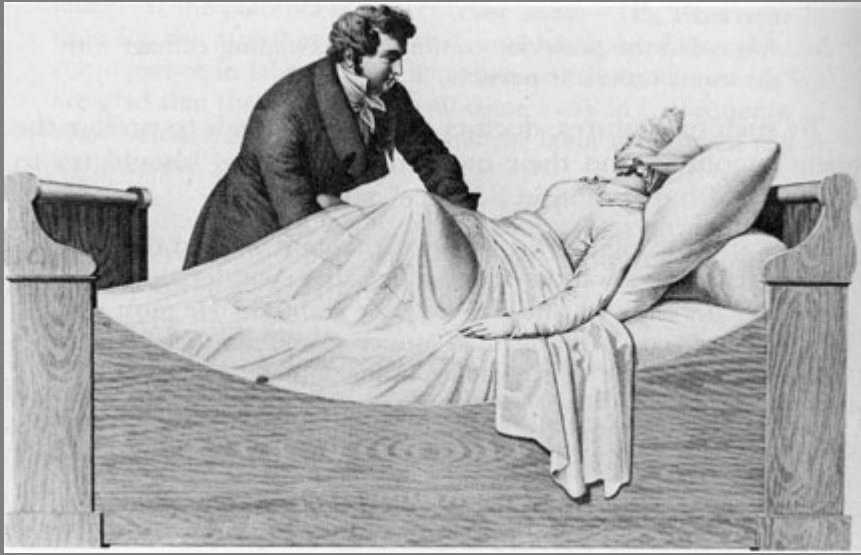




Disease is a social and political category imposed on people within an enormously repressive social and economic capitalist system, one that forces disease and death on the world's people"

Vicente Navarro, MD. Faculty Director, Johns Hopkins Bloomberg School of Public Health

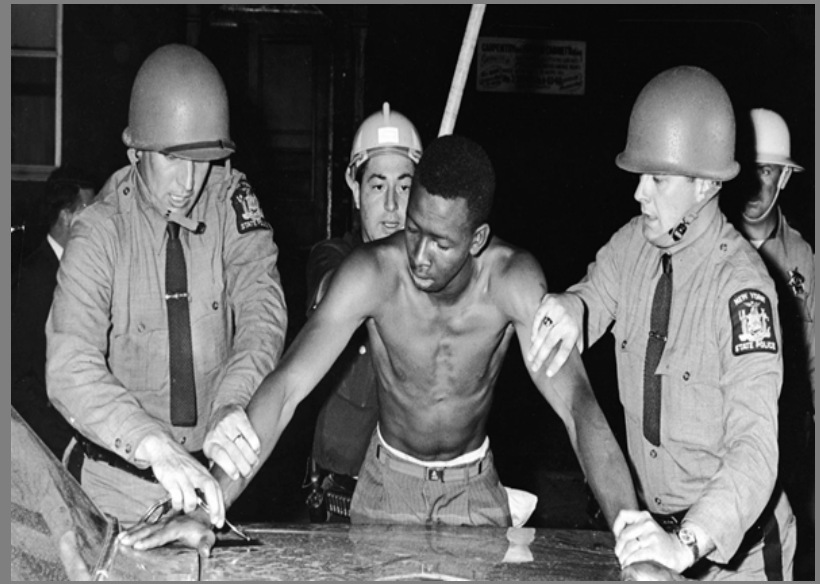




13th Amendment

Section 1. Neither slavery nor involuntary servitude, except as a punishment for crime whereof the party shall have been duly convicted, shall exist within the United States, or any place subject to their jurisdiction.

Section 2. Congress shall have power to enforce this article by appropriate legislation.



Sheppard- Towner Act-1921

- Created Federal Aid for Maternal Child Health
- Created regulations for training/licensure
- These schools were largely inaccessible to Black women due to cost or segregation
- Traditional immigrant and Black Midwives illegal

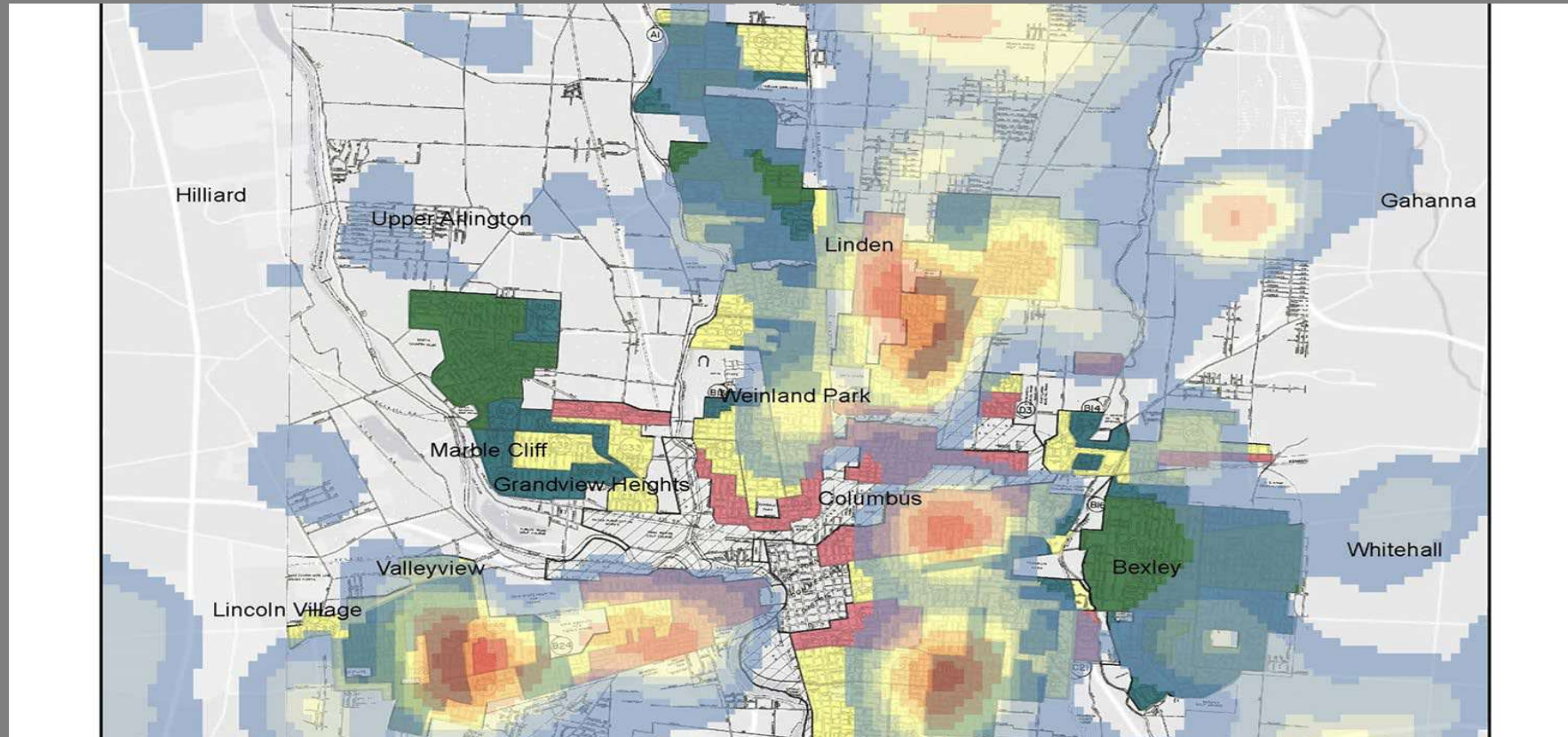




Michelle Mary
Coley (c. 1950)
delivered some
3,000 babies.



Homeowners Loan Corporation



HOLC Grade



A



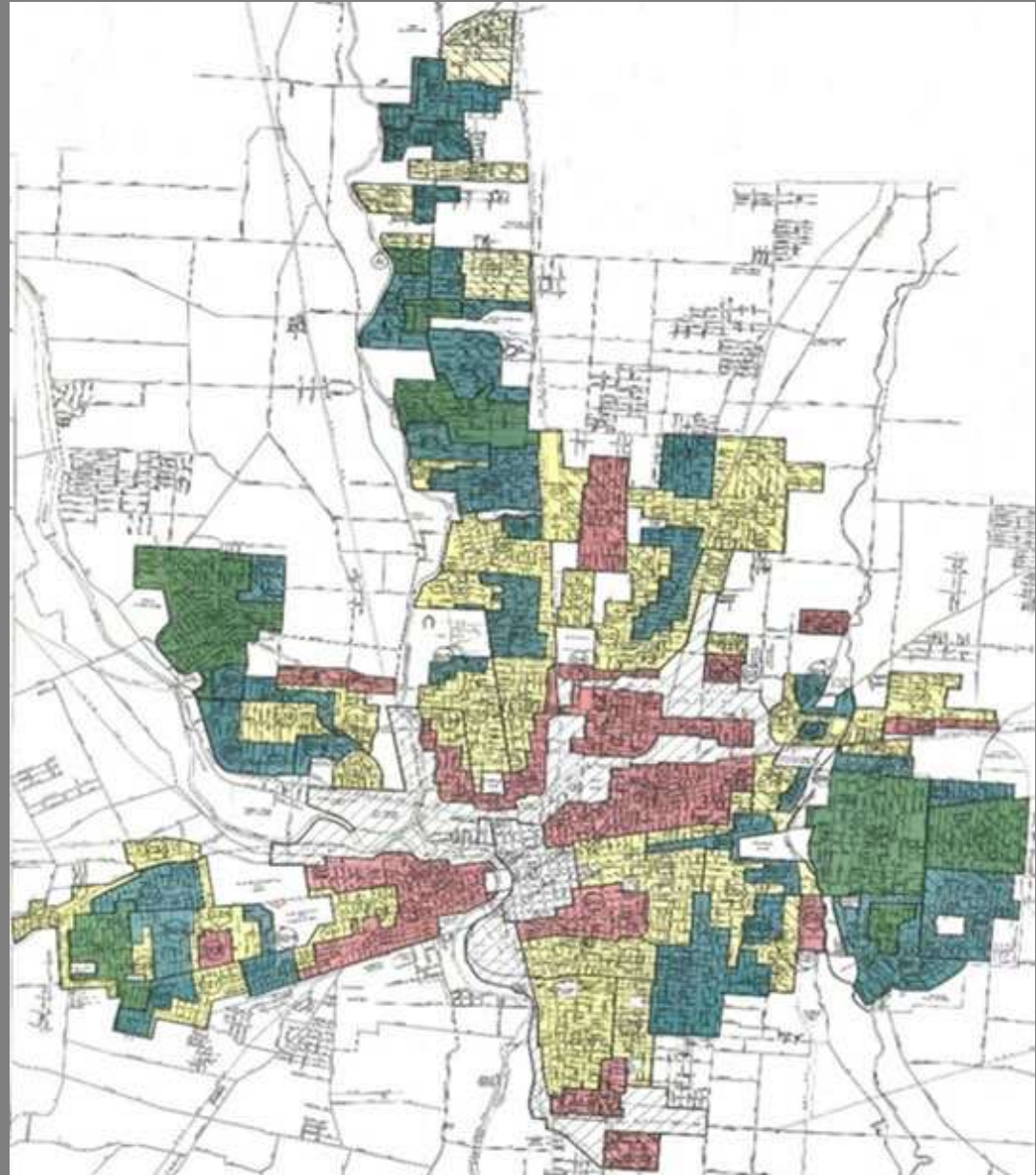
B

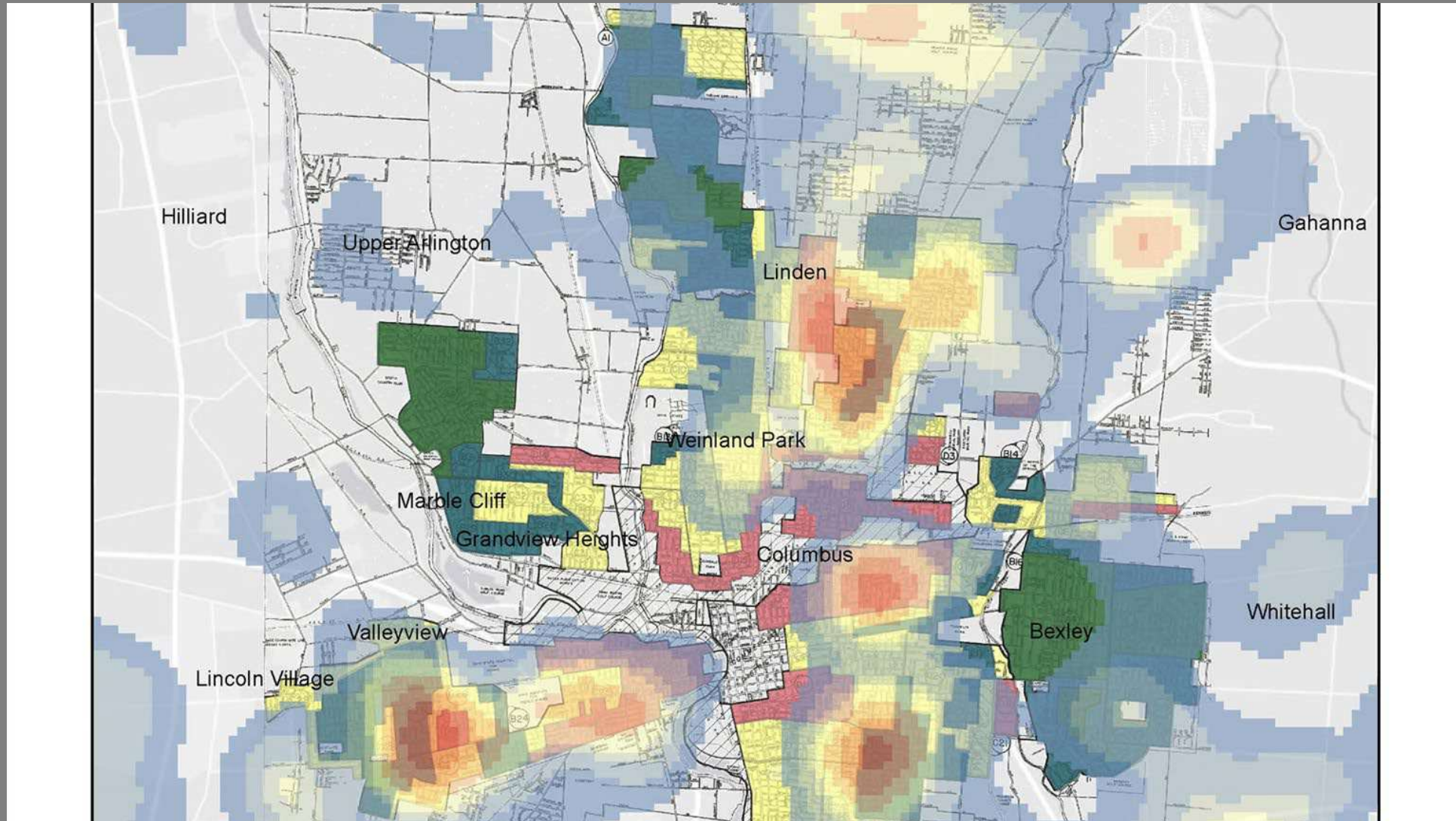


C



D



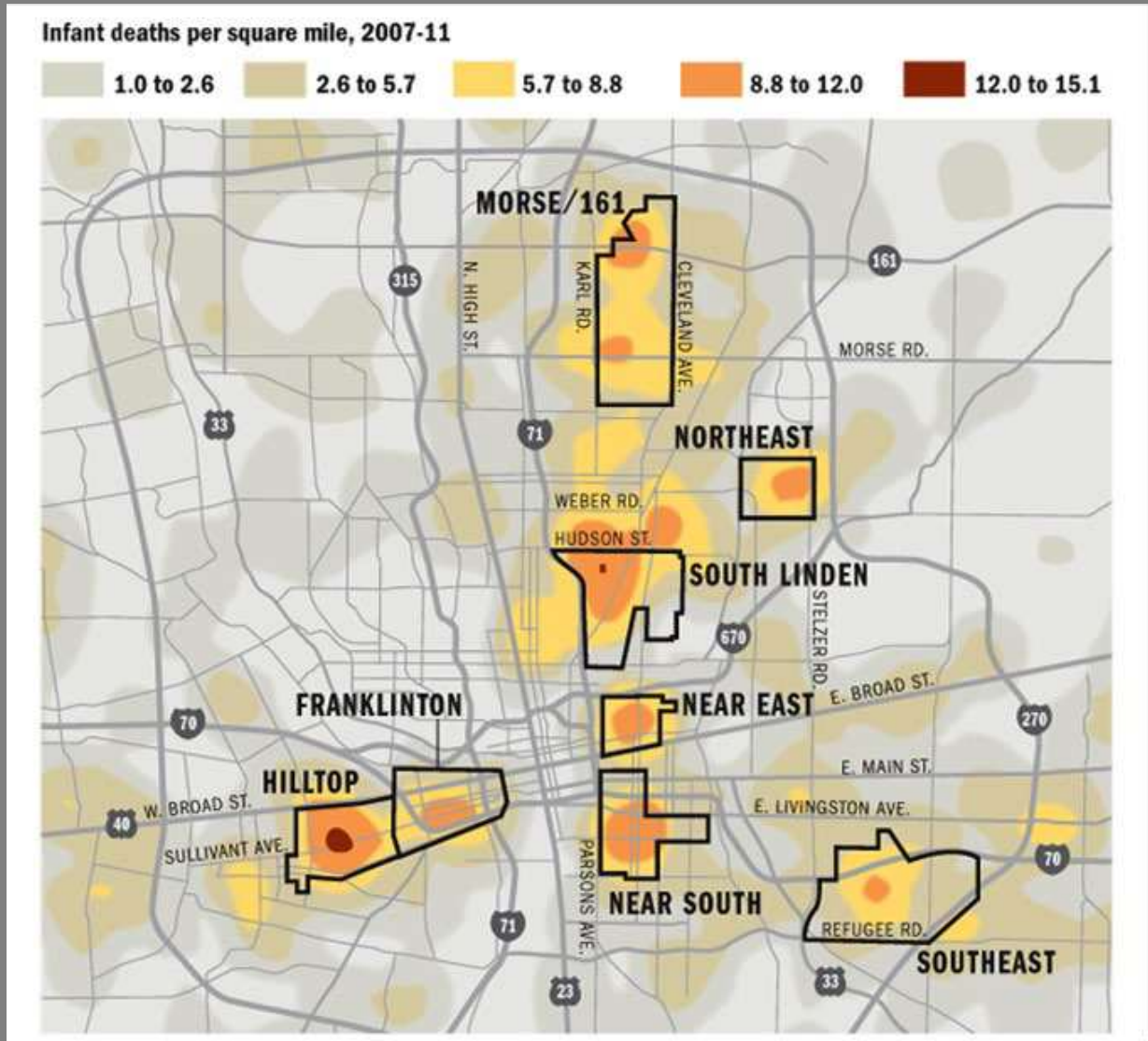
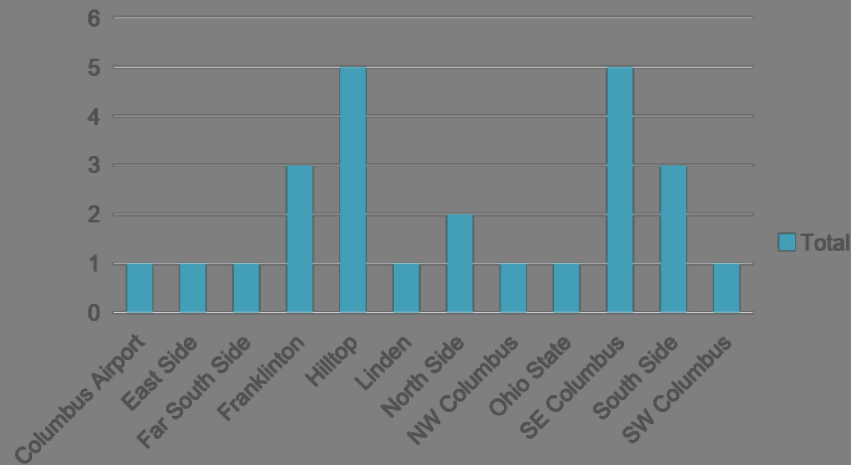


Courtesy of Kirwan Institute for the Study of Race and Ethnicity, B Butler, MPH and J Roach MPH, 2016



Police Shootings 2015 to 2018 (by Neighborhood) and Neighborhood Infant Mortality Rates

Police Shootings 2015 to 2018



Near East Side: Shooting Death of Tyree King (13) by Columbus police after pulling out air pistol

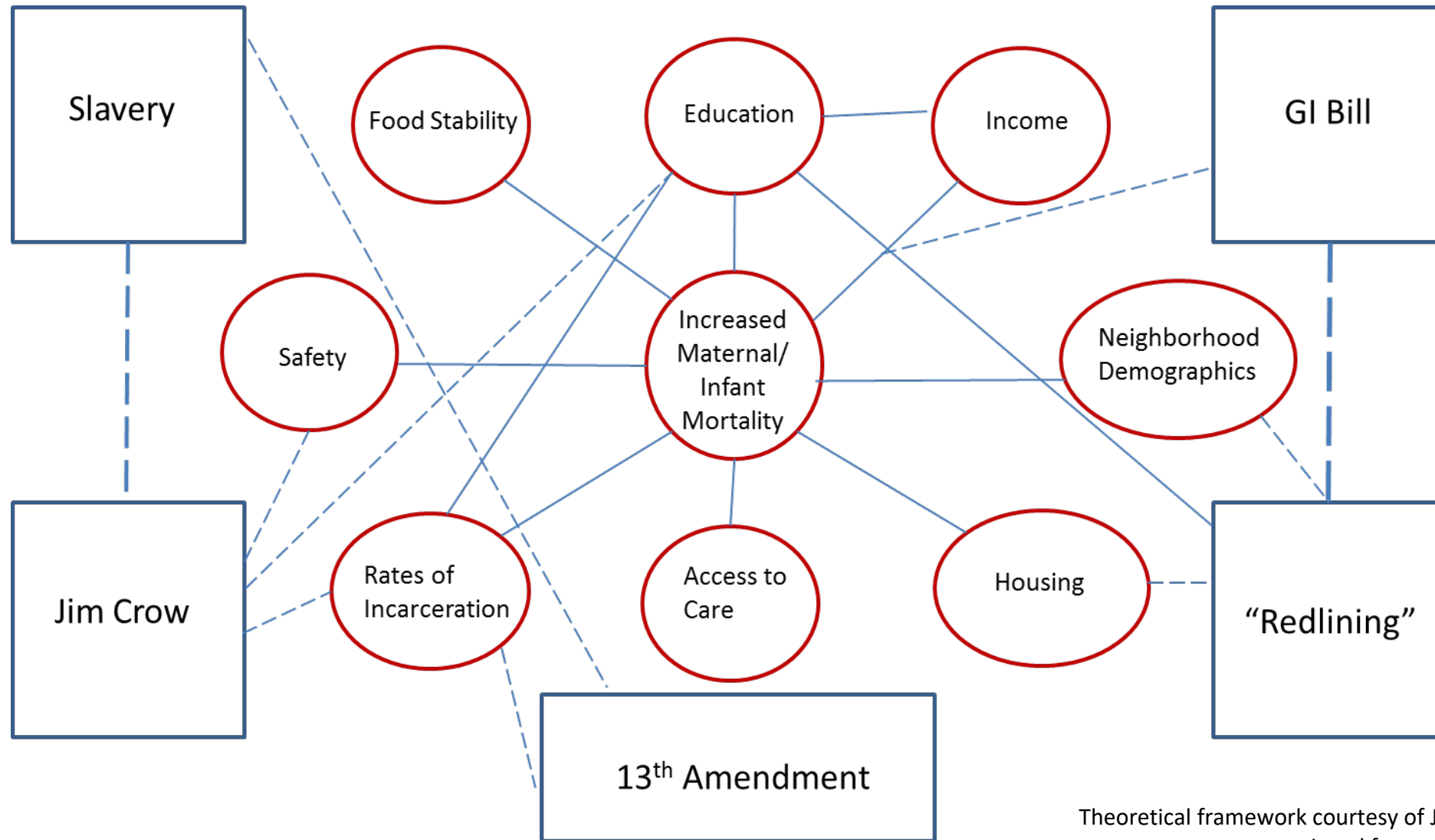


Police Shootings 2015 to 2018 (by Neighborhood) and Neighborhood Conditions (Infant Mortality Rates & Historical Redlining)

- Formerly redlined neighborhoods and areas with the highest infant mortality rates have a disproportionate experience with police violence
- Of 25 police shootings since 2015 in Columbus Ohio
 - 20 (80%) were in the general vicinity of neighborhoods which have been identified as infant mortality hot spot areas
 - 13 (52%) were in areas which were historically redlined
 - Four neighborhoods contained 2/3's (64%) of all police shootings (Hilltop, Franklinton, South Side, SE Side)

WEB OF CAUSATION

STRUCTURAL and SOCIAL DETERMINANTS: IMPACT ON HEALTH



Theoretical framework courtesy of J.Roach, 2016.
retrieved from www.roott.org



Without addressing, **disrupting**,
and **dismantling** the structural
determinants, we **will not** be able
to address social determinants.



ROLE OF COMMUNITY BASED ORGANIZATIONS:

Restoring Our Own Through Transformation (ROOTT)

- Full Spectrum Doulas as Perinatal Support Persons (Training and Certification)
- Healthcare Providers Training and Continuing Education
- Organizational Consultation
- Policy advisement (State and Federal)
- Public Health Research (Independent and Institutional)



ROOTT PERINATAL SUPPORT DOULAS

- Full Spectrum
- Perinatal Support
- Breastfeeding Education
- CLC certified
- Advocacy
- Informed Decision
- Family centered



This is how
we ROOTT!!

www.roottrj.org



ROOTT Origin Story
NPR Story Corp, 8-2019





BMMA

BLACK MAMAS MATTER ALLIANCE



“At some point, we must acknowledge and address how the foundation of Obstetrics and Gynecology as we know it in the U.S., was built from the stolen knowledge and traditions of Black and Indigenous Women...and used against us through means of rape, sexual assault, pedophilia, eugenics, and genocide. Reproductive Justice is the definition by which we say, WE are taking this back.”

Jessica M. Roach, MPH

”Race neutral solutions are impotent in the address of intentional, race-specific racism. Consequently, true health equity will certainly change the lives of the oppressed and the oppressor, in ways that may lead to the deconstruction of American inhumanity.”

DL Wingard, MPA



Q&A

Please submit questions using the Q&A module in the Whova platform.

#HealthyStartVGM2021
#HealthyStartStrong
@HS_TASC @NICHQ

*Social Determinants of Health Through a Structural Lens
Hosted by the Healthy Start TA & Support Center at NICHQ on November 3, 2021*



NICHQ
National Institute for
Children's Health Quality

**HEALTHY
start**
TA & SUPPORT CENTER



Thank you for joining us!

If you need any support...

Please email healthystart@nichq.org

Upcoming Session: 4:30 pm ET
**Collaborative Approaches to Addressing
Maternal and Infant Health Disparities**

*Social Determinants of Health Through a Structural Lens
Hosted by the Healthy Start TA & Support Center at NICHQ on November 3, 2021*

NICHQ
National Institute for
Children's Health Quality

**HEALTHY
start**
TA & SUPPORT CENTER

#HealthyStartVGM2021
#HealthyStartStrong
@HS_TASC @NICHQ